



## A FG-3D wheel measurement safety system

### Description

The system is designed for contactless automatic measurement of geometrical parameters of railway wheels. With the data collected with the measurement system can automatically be viewed in our web-based dashboards.

The system has primarily been designed for safety, since it will identify any train or tram that has wheels that don't meet the required safety specifications.

- Real-time measurement of moving train wheels
- Easy installing at any type of rail infrastructure
- Incorporating the latest video and laser technology
- Eliminates manual measurement error
- 24 hours operation

### Basic technical data

#### Light system (maintenance locations)

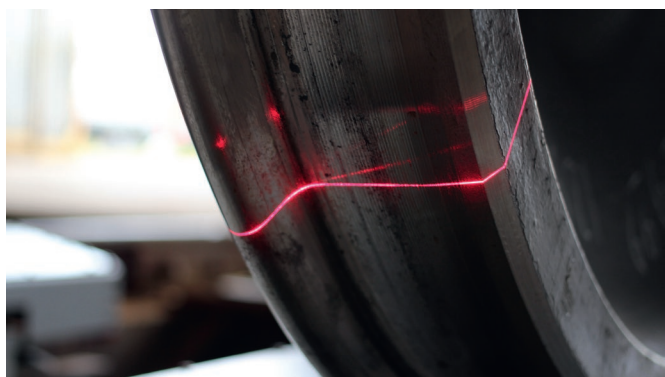
Train speed – up to 15 km/hour

#### Standard system

Train speed – up to 200 km/hour

#### Premium system

Train speed – up to 350 km/hour  
(available from Q4 2018).



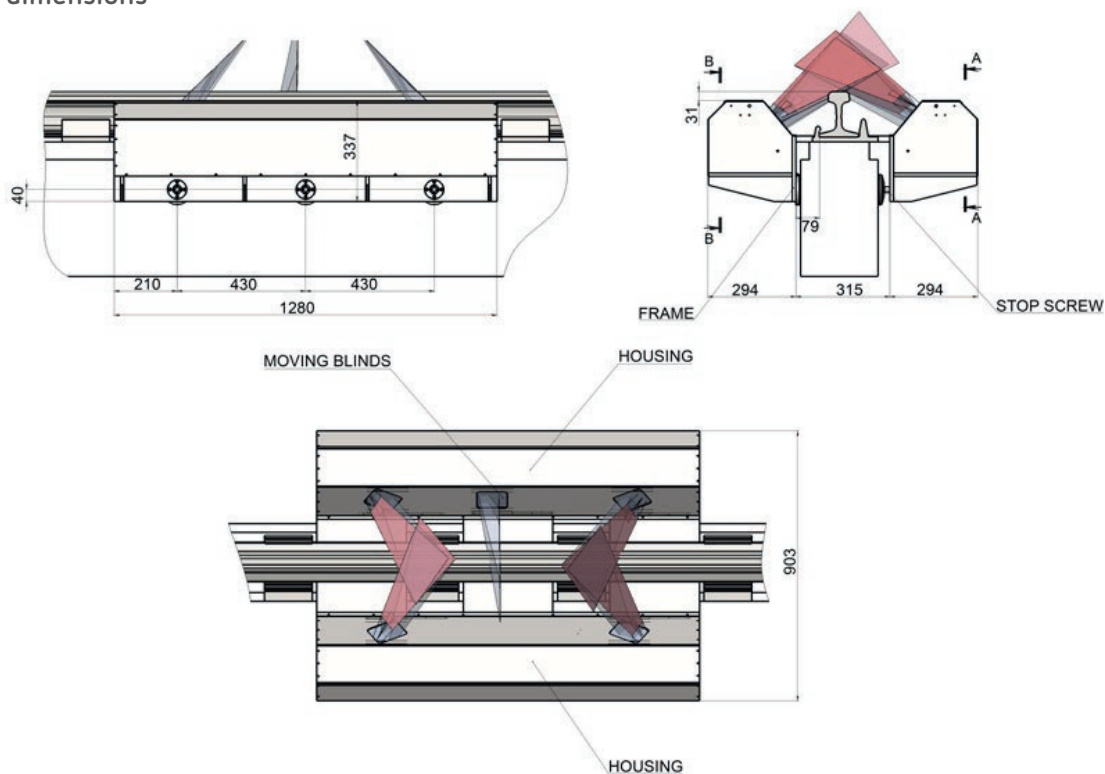
Name of parameter	Accuracy
Wheel profiles	+/- 0,1 mm
Flange height	+/- 0,1 mm
Flange width	+/- 0,1 mm
Flange angle	+/- 0,1 mm
Rim thickness	+/- 0,1 mm
Tread width	+/- 0,1 mm
Back to back gauge	+/- 0,05 mm
Wheel diameter	+/- 0,2 mm

### Scope of delivery

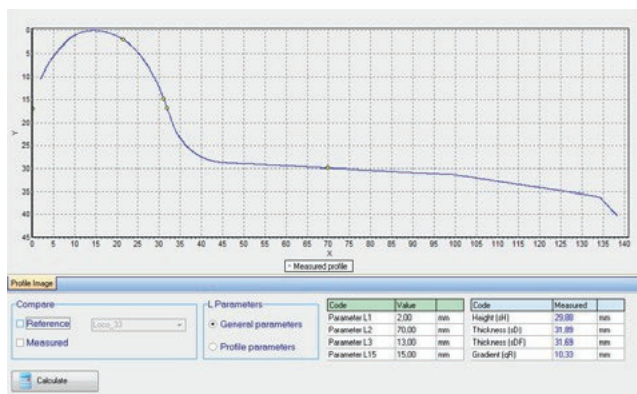
- Frames with laser scanners,
- Inductive sensors of wheel presence,
- Industry computer,
- Software,
- Calibration carriage.



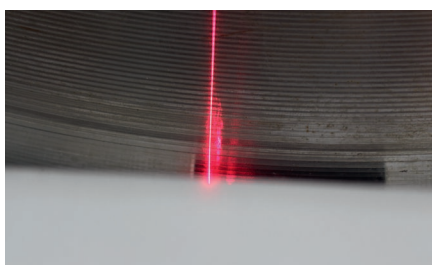
Overall dimensions



Gallery



wheel set	thickness (Left)	thickness (right)	height (Left)	height(right)	slope(Left)	slope(right)	Diameter (Left)	Diameter (right)	radial irregularity (Left)	radial irregularity (right)	in width (Left)	in width(right)	AXIS
1	29.7442	29.8969	30.9306	30.9394	10.7711	10.7028	864.609	866.89	0	0	135.975	135.610	1409.81
2	29.9989	29.2414	30.0701	29.3699	10.4965	11.2275	864.609	866.41	0.02	0.02	135.190	135.309	1408.06
3	30.2067	30.4769	30.1700	30.1787	10.9099	11.9716	860.081	860.47	0.01	0.01	134.942	135.969	1408.6
4	29.9003	29.9985	30.5714	29.8643	10.9147	10.9188	799.905	800.947	0.10	0.14	134.87	135.196	1408.28
5	29.622	29.2168	30.1274	29.3821	10.8764	11.042	796.112	797.444	0.09	0.20	135.297	135.527	1409.62
6	29.9499	29.7402	30.5416	29.7222	11.2061	10.7746	795.952	796.54	0.01	0.19	134.695	135.068	1409.15
7	30.4883	29.3876	30.28	29.2851	10.9783	10.8008	794.05	796.081	0.09	0.21	135.282	135.502	1408.88
8	29.8049	29.7403	30.238	29.895	10.7368	10.8096	795.665	797.704	0.09	0.01	134.784	135.048	1408.1
9	30.5647	30.1286	30.4614	30.4936	10.9336	10.9996	863.212	863.873	0.07	0.05	135.295	135.968	1407.76
10	30.2016	30.3027	29.8341	29.9095	10.9545	11.1782	863.68	864.214	0.09	0.04	135.293	135.907	1407.99



The information provided herein is to the best of our knowledge true and accurate, it is provided for guidance only. All specifications are subject to change without prior notification.

Althen – Your expert partner in Sensors & Controls | [althensensors.com](http://althensensors.com)

Althen stands for pioneering measurement and custom sensor solutions. In addition we offer services such as calibration, design & engineering, training and renting of measurement equipment.

Germany/Austria/Switzerland  
info@althen.de

Benelux  
sales@althen.nl

France  
info@althensensors.fr

Sweden  
info@althensensors.se

USA/Canada  
info@althensensors.com

Other countries  
info@althensensors.com