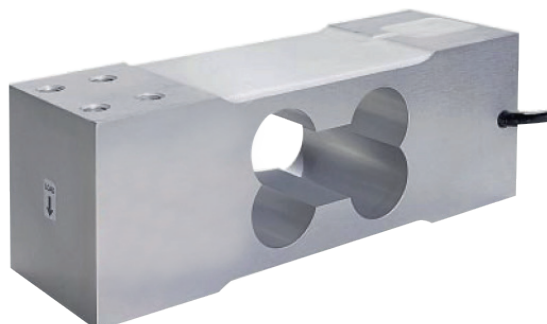




kg **AOBUR SERIES**
Single point / Bending Beam Load Cell (1kg ~ 250kg)

The AOBUR series single point load cell is designed for low profile scales and automatic check weighing systems where great accuracy, reliability and fast measurement are required.



SPECIFICATIONS

MODEL		AOBUR	
Rated capacity (R.C.)		1, 3 kg	6, 10, 25, 30, 50, 52, 100, 150, 250kg
Rated output(R.O.)		1mV/V± 10%	2mV/V ± 10%
Non-linearity		≤ 0.02% R.O.	
Hysteresis		≤ 0.02% R.O.	
Non-repeatability		≤ 0.02% R.O.	
Creep error		≤ 0.03% in 20min.	
Zero balance		≤ 5% R.O.	
Compensated temperature range		-10 ~ 70 °C	
Operating temperature range		-20 ~ 80°C	
Temp. effect on rated output		≤ 0.012% LOAD/10 °C	
Temp. effect on zero balance		≤ 0.03% R.O./10 °C	
Terminal input resistance		420 Ohms ±20 Ohms	
Terminal output resistance		350 Ohms ±5 Ohms	
Insulation resistance (Min.)		2000 MOhms at 50V DC	
Excitation Voltage		3~12V(Recommended) / 15V(Maximun)	
Electrial connection	1~30 kg	ø 4mmx1.5m(22AWG x 4Core Shielded)	
	50~250kg	ø 5mmx1.5m(22AWG x 4Core Shielded)	
Protection class		meets IP 65	
Safe overload		150% R.C	
Ultimate overload		300% R.C	

Capacity	Allowable Maximum Platform Size
1, 3 kg (9.807, 29.42N)	200 x 200 mm
6 ~ 30 kg (58.84 ~ 294.2N)	300 x 300 mm
50 kg (490.3N)	400 x 500 mm
52 ~ 250 kg (510.0 ~ 2452N)	400 x 600 mm



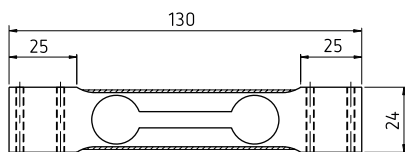
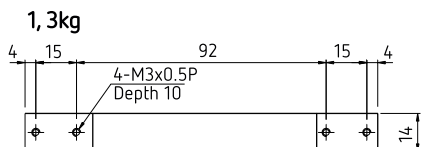
DIMENSION-mm

ORDERING INFORMATION

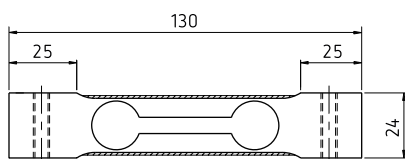
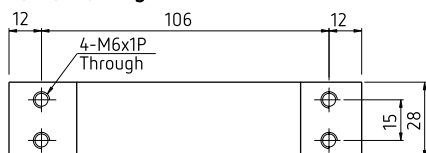
AOBUR - 100

MODEL
AOBUR

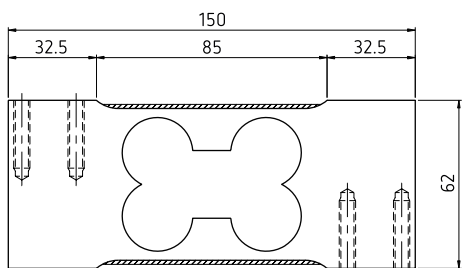
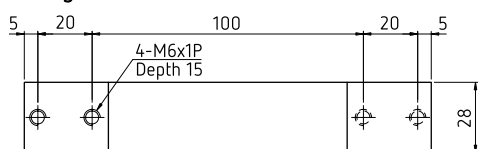
CAPACITY
1, 3, 6, 10,
25, 30, 50,
52, 100, 150,
250 kg



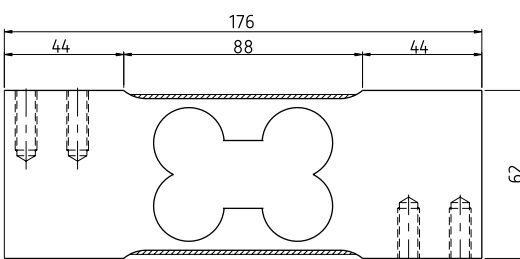
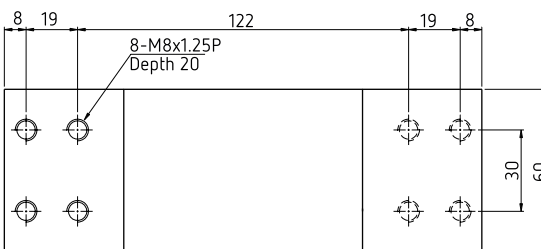
6, 10, 25, 30kg



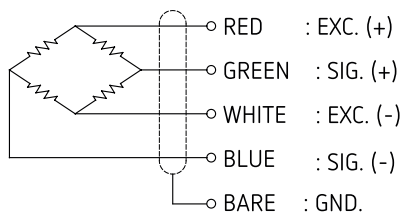
50kg



52, 100, 150, 250kg



WIRING INFORMATION



★ Specifications are subject to change without notice