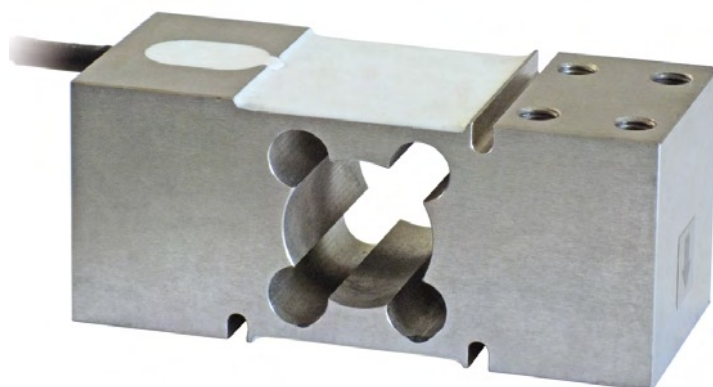




N PEC Single Point Loadcell

Description

- Capacity from 75 kg to 500 kg
- AISI 420 stainless steel
- Combined error = $\pm 0.02\%$
- Protection class IP67



Manufactured according to OIML R60 standards

Technical data

CAPACITY	kg	IECEX	Ex	EAC	PLATFORM DIMENSION (mm)	NET WEIGHT OF LOAD CELL (kg)	CODE
75		•	•	•	600 x 600	1.8	PEC75
150		•	•	•	600 x 600	1.8	PEC150
300		•	•	•	600 x 600	2	PEC300
500		•	•	•	600 x 600	2	PEC500

ON REQUEST

Certifications

CERTIFICATIONS ON REQUEST



ATEX II 1GD (zone 0-1-2-20-21-22)

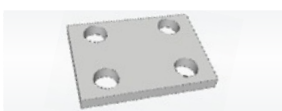


IECEX (zone 0-1-2-20-21-22)



Complies with the Eurasian Custom Union regulations (Russia, Belarus, Kazakhstan)

Complementary accessories



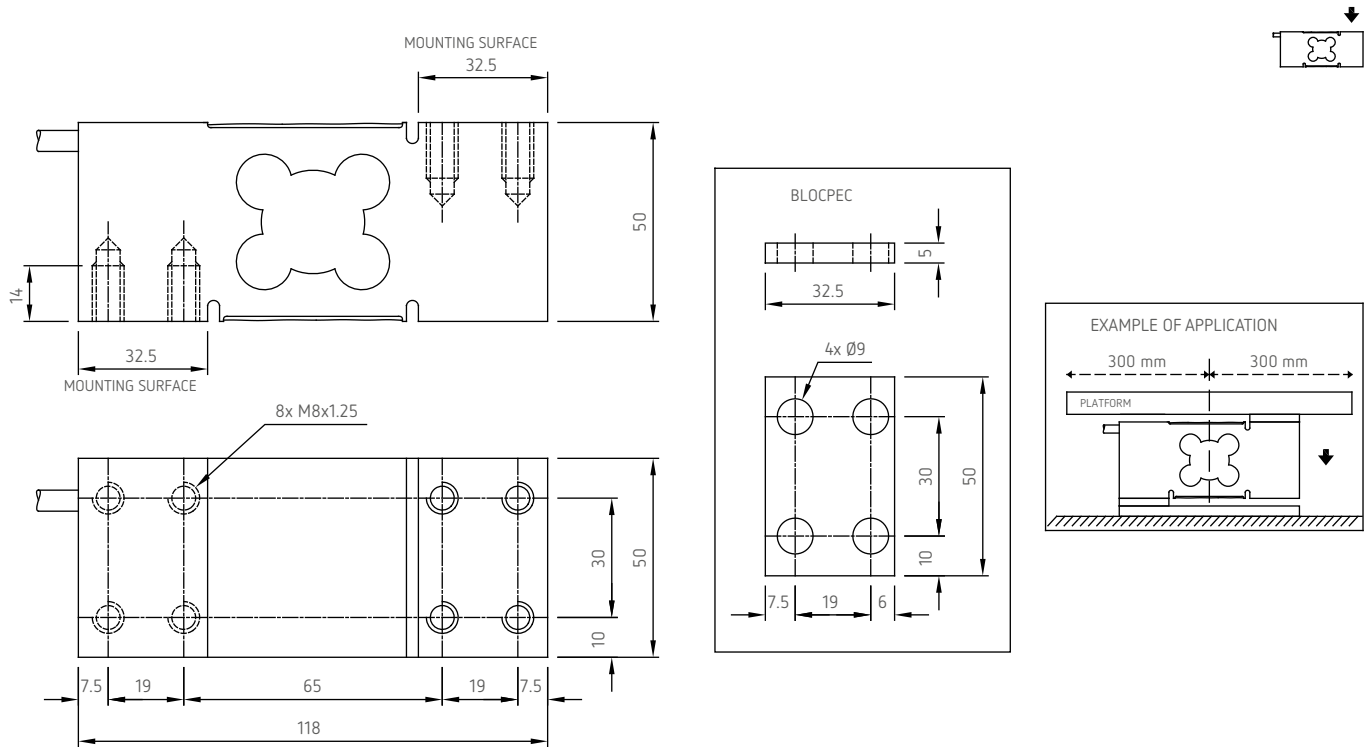
DESCRIPTION

Stainless steel drawn block.

CODE

BLOCPEC

DIMENSIONS (mm)



Technical features

Material	AISI 420 stainless steel		
Nominal load (E max)	75 - 150 - 300 - 500 kg		
Protection class	IP67		
Rated output	2 mV/V ±10%	Input resistance	385 Ω ±30
Temperature effect on zero	0.002% °C	Output resistance	350 Ω ±5
Temperature effect on span	0.002% °C	Zero balance	±1%
Compensated temperature range	-10 °C / +40 °C	Insulation resistance	>5000 MΩ
Operating temperature range	-20 °C / +60 °C	Safe overload (% of full scale)	150%
Creep at nominal load in 30 minutes	0.02%	Ultimate overload (% of full scale)	300%
Max supply voltage without damage	15 V	Deflection at nominal load	0.3 mm

Electrical connections

Cable length	3 m
Cable diameter	5 mm
Cores	4/6 x 0.20 mm ²

