



mm FDRF603 Series



Valid for sensors with serial numbers 19300 and higher

Certified according to ISO 9001:2008

■ Contents

1.	Safety precautions	4
2.	Electromagnetic compatibility.....	4
3.	Laser safety.....	4
3.1.	Class 3B sensors.....	4
3.2.	Class 3R sensors	5
3.3.	Class 2 sensors	5
3.4.	Class 1 sensors	5
4.	General information.....	6
5.	Basic technical data	6
6.	Example of item designation when ordering	7
7.	Structure and operating principle	7
8.	Dimensions and mounting.....	8
8.1.	Overall and mounting dimensions	8
8.2.	Mounting of the sensors for mirror surface control.....	9
8.3.	Overall demands for mounting	9
9.	Connection	9
9.1.	Designation of connector contacts	9
9.2.	Cables.....	10
10.	Configuration parameters.....	11
10.1.	Time limit for integration	11
10.2.	Sampling mode.....	11
10.3.	Sampling period.....	11
10.4.	The point of zero.....	12
10.5.	Line AL operation mode	12
10.6.	Time lock of the result	13
10.7.	Method of results averaging	13
10.8.	Number of averaged values/time of averaging	13
10.9.	Factory parameters table.....	13
11.	Description of RS232 and RS485 interfaces	14
11.1.	RS232 port	14
11.2.	RS485 port	14
11.3.	Modes of data transfer.....	14
11.4.	Configuration parameters	14
11.4.1.	Rate of data transfer through serial port.....	14
11.4.2.	Net address.....	14
11.4.3.	Factory parameters table.....	14
11.5.	Interfacing protocol	15
11.5.1.	Serial data transmission format	15
11.5.2.	Communication sessions types	15
11.5.3.	Request.....	15
11.5.4.	Message	15
11.5.5.	Answer	15
11.5.6.	Data stream	16
11.5.7.	Output Rate.....	16
11.5.8.	Request codes and list of parameters	16
12.	Description of CAN interface	16
12.1.	Modes of data transfer.....	16
12.2.	Configuration parameters	16
12.2.1.	Data transmission rate via CAN interface.....	16
12.2.2.	Identifiers	16
12.2.3.	Factory parameters table.....	17
12.2.4.	Format of transmitted data.....	17
13.	Description of Ethernet interface.....	17
13.1.	Modes of data transfer.....	17
13.2.	Factory parameters table.....	17
13.3.	Data packet format	17
13.4.	Data structure	18
14.	Analog outputs	18

14.1.	Current output 4...20 mA.....	18
14.2.	Voltage output	19
14.3.	Configuration parameters	19
14.3.1.	Range of the analog output	19
14.3.2.	Analog output operation mode.....	19
14.4.	Factory parameters table.....	19
15.	Request codes and list of parameters	19
15.1.	Request codes table	19
15.2.	List of parameters	20
15.3.	Notes	21
15.4.	Examples of communication sessions	22
16.	Parameterization program.....	24
16.1.	Function	24
16.2.	Program setup	24
16.3.	Obtaining connection to sensor (RS232/RS485)	24
16.4.	Checking of the sensor operability	25
16.5.	Connection through Ethernet interface.....	26
16.6.	Display, gathering and scanning of data	27
16.7.	Setting and saving parameters of the sensor.....	27
16.7.1.	Setting parameters	27
16.7.2.	Automatic data stream mode after power switch on.....	29
16.7.3.	Saving parameters.....	29
16.7.4.	Saving and writing a group of parameters.....	29
16.7.5.	Recovery of default parameters.....	29
17.	RFSDK	29
18.	Appendix	30
18.1.	Protective housing	30
18.2.	Spray guard	31
18.3.	Size of the laser spot and mounting space	31
18.4.	Connector mounting options	32
19.	Warranty policy.....	34
20.	Revisions.....	34

1. Safety precautions

- Use supply voltage and interfaces indicated in the sensor specifications.
- In connection/disconnection of cables, the sensor power must be switched off.
- Do not use sensors in locations close to powerful light sources.
- To obtain stable results, wait about 20 minutes after sensor activation to achieve uniform sensor warm-up.

2. Electromagnetic compatibility

The sensors have been developed for use in industry and meet the requirements of the following standards:

- EN 55022:2006 Information Technology Equipment. Radio disturbance characteristics. Limits and methods of measurement.
- EN 61000-6-2:2005 Electromagnetic compatibility (EMC). Generic standards. Immunity for industrial environments.
- EN 61326-1:2006 Electrical Equipment for Measurement, Control, and Laboratory Use. EMC Requirements. General requirements.

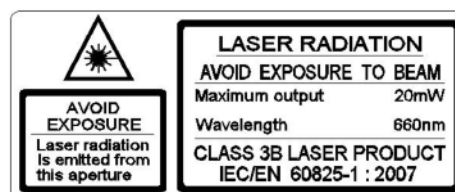
3. Laser safety

The sensors correspond to the following laser safety classes according to IEC 60825-1:2007

Model of the sensor	FDRF603-R	FDRF603L	FDRF603	FDRF603P
Wavelength			660 nm	
Output power	≤0,2 mW	≤0,95 mW	≤3 or ≤4,8 mW	≤20 mW
Laser safety class	1	2	3R	3B

3.1. Class 3B sensors

The sensors make use of an c.w. 660 nm wavelength semiconductor laser. Maximum output power is 20 mW. The sensors belong to the 3B laser safety class. The following warning label is placed on the laser body:



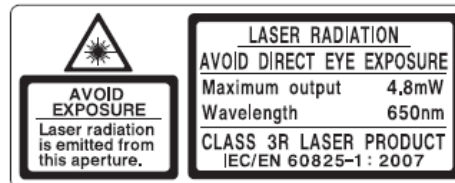
The following safety measures should be taken while operating the sensor:

- Do not target laser beam to humans;
- Avoid staring into the laser beam through optical instruments;
- Mount the sensor so that the laser beam is positioned above or below the eyes level;
- Mount the sensor so that the laser beam does not fall onto a mirror surface;
- Use protective goggles while operating the sensor;
- Avoid staring at the laser beam going out of the sensor and the beam reflected from a mirror surface;
- Do not disassemble the sensor;

- Use the protective screen mounted on the sensor for the blocking of the outgoing beam;
- Use the laser deactivation function in emergency.

3.2. Class 3R sensors

The sensors make use of an c.w. 660 nm wavelength semiconductor laser. Maximum output power is 5 mW. The sensors belong to the 3R laser safety class. The following warning label is placed on the laser body:

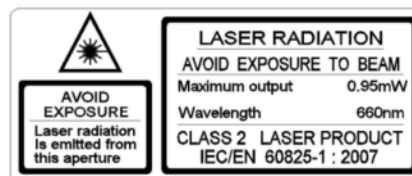


The following safety measures should be taken while operating the sensor:

- Do not target laser beam to humans;
- Avoid staring into the laser beam through optical instruments;
- Mount the sensor so that the laser beam is positioned above or below the eyes level;
- Use protective goggles when operating the sensor;
- Avoid staring into the laser beam;
- Do not disassemble the sensor.

3.3. Class 2 sensors

The sensors make use of an c.w. 660 nm wavelength semiconductor laser. Maximum output power is 1 mW. The sensors belong to the 2 laser safety class. The following warning label is placed on the laser body:



The following safety measures should be taken while operating the sensor:

- Do not target laser beam to humans;
- Do not disassemble the sensor;
- Avoid staring into the laser beam.

3.4. Class 1 sensors

The sensors make use of an c.w. 660 nm wavelength semiconductor laser. Maximum output power is <0,2 mW. The sensors belong to the 1 laser safety class. The following warning label is placed on the laser body.



The following safety measures should be taken while operating the sensor:

- Avoid staring into the laser beam during a prolonged time period;
- Do not disassemble the sensor

4. General information

The sensors are intended for non-contact measuring and checking of position, displacement, dimensions, surface profile, deformation, vibrations, sorting and sensing of technological objects as well as for measuring levels of liquid and bulk materials.

The series includes 26 sensors with the measurement range, from 2 to 1250 mm and the base distance from 10 to 260 mm.

There are two options of laser mounted in the sensor, RED or BLUE laser. The use of blue lasers instead of conventional red lasers greatly enhances capabilities of the sensors, in particular, for such uses as control of high-temperature objects and organic materials. Custom-ordered configurations are possible with parameters different from those shown below.

5. Basic technical data

FDRF603-	R- X/4	X/2	X/5	X/10	X/15	X/25	X/30	X/50	X/100	X/250	X/500	X/750	X/1000	X/1250
Base distance X, MM	39	15	15	15, 25 60	15, 30 65	25, 45 80	35, 55 95	45, 65 105	60, 90 140	80	125	145	245	260
Measurement range, mm	4	2	5	10	15	25	30	50	100	250	500	750	1000	1250
Linearity, %	±0.05 of the range													±0.1
Resolution, %	0.01 of the range (for the digital output only)													0.02
Temperature drift	0,02% of the range/ °C													
Max. measurement frequency, Hz	9400													
Light source	red semiconductor laser, 660 nm wavelength or UV semiconductor laser 405 nm wavelength (BLUE version)													
model	FDRF603													
output power	≤0,2	≤3 mW												
laser safety Class	1	3R (IEC60825-1)												
model	FDRF603L													
output power	≤0,95 mW													
laser safety Class	2 (IEC60825-1)													
model												FDRF603P		
output power												≤20 mW		
laser safety Class												3B (IEC60825-1)		
Output interface	digital	RS232 (max. 460,8 kbit/s) or RS485 (max. 921,6 kbit/s) or RS232 and CAN V2.0B (max 1Mbit/s) or Ethernet and (RS32 or RS485)												
	analog	4...20 mA (500 Ω load) or 0...10 V												
Synchronization input	2,4 – 5 V (CMOS, TTL)													
Logic output	programmed functions, NPN: 100 mA max; 40 V max for output													
Power supply, V	9 ...36													
Power consumption, W	1,5..2													
Environment resistance	Enclosure rating	IP67 (for the sensors with cable connector only)												
	Vibration	20g/10...1000Hz, 6 hours, for each of XYZ axes												
	Shock	30 g / 6 ms												
	Operation temperature, °C	-10...+60, (-30...+60 for the sensors with in-built heater), (-30...+120 for the sensors with in-built heater and air cooling housing)												
	Permissible ambient light, lx	10000 – RF603L, 30000 – RF603, >30000 – RF603P												
	Relative humidity	5-95% (no condensation)												
	Storage temperature	-20...+70 , °C												
Housing material	aluminum													
Weight (without cable),	100 gram													

Note 1: RF603-R-39/4 sensor is designed to use with mirror surfaces and glass

6. Example of item designation when ordering

FDRF603(BLUE)(L/P)-X/D(R)-SERIAL-ANALOG-IN-AL-CC(R)(90)-M-H-P-B

Symbol	Description
(BLUE)	Blue (405 nm) laser option
L	L or P – attribute showing Laser safety Class 2 or Class 3B
X	Base distance (beginning of the range), mm
D	Measurement range, mm
(R)	Round shape laser spot (see p.19.3.)
SERIAL	The type of serial interface: RS232-232 or RS485-485 or (CAN and RS232) - CAN, or (Ethernet and RS232) – 232-ET or (Ethernet and RS485) – 485-ET
ANALOG	Attribute showing the presence of 4...20 mA (I) or 0...10V (U) Note: 1) I output – only for sensors with RS232 or RS485 2) U output – only for sensors with RS232 or RS485 or CAN
IN	Trigger input (input of synchronization) presence
AL	User programmed signal, which has several purposes. It can be used as 1) logical output (indication of run-out beyond the range); 2) line of mutual synchronization of two and more sensors 3) line of hardware zero setting 4) hardware laser switch ON/OFF Note: option AL is not available for sensors with in-built heater
CC(90X)(R)	Cable gland - CG, or cable connector - CC (Binder 712, IP67) Note 1: sensors with CAN or Ethernet interfaces have 2 connectors or two cable glands. Note 2: 90(X) option – angle cable connector (see. p. 19.4) Note 3: R option – robot cable
M	Cable length, m
H	Sensor with in-built heater
P	Sensor with protect air cooling housing (see p.19.1)
B	Sensor with spray guard (see p.19.2.)

Example: FDRF603L-140/100R-232-I-IN-AL-24-CCR90A-3 – Class 2 laser, base distance – 140 mm, range – 100mm, round shape laser spot, RS232 serial port, 4...20mA analog output, trigger input and AL input are available, cable connector, angle type, position "A", robot cable, 3 m cable length.

7. Structure and operating principle

Operation of the sensors is based on the principle of optical triangulation (Figure 1.). Radiation of a semiconductor laser 1 is focused by a lens 2 onto an object 6. Radiation reflected by the object is collected by a lens 3 onto a linear CMOS array 4. A signal processor 5 calculates the distance to the object from the position of the light spot on the array 4.

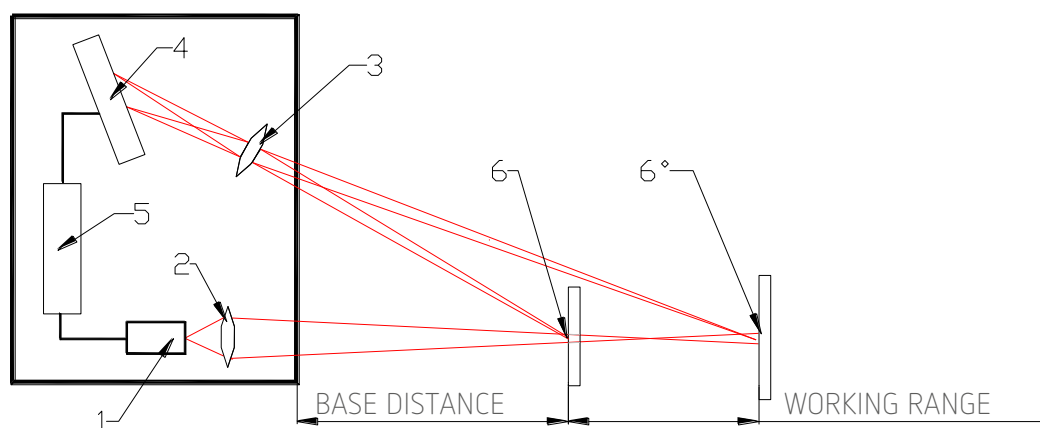


Figure 1

8. Dimensions and mounting

8.1. Overall and mounting dimensions

Overall and mounting dimensions of the sensors are shown in Figure 2 and 2.1.

Sensor package is made of anodized aluminum. The front panel of the package has two Glass windows: one is output, the other for receiving radiation reflected from the object under control. The package also contains mounting holes.

Sensors are equipped by cable gland or connector. Sensors with CAN or Ethernet interface are equipped by two connectors, Figures 3 and 3.1.

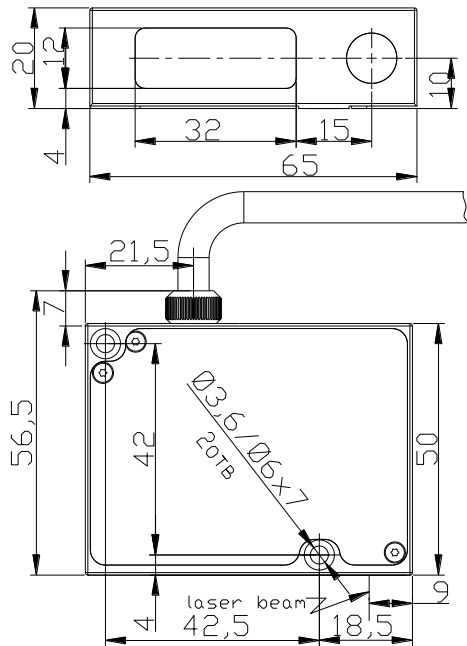


Figure 2. Sensor with cable gland (CG)

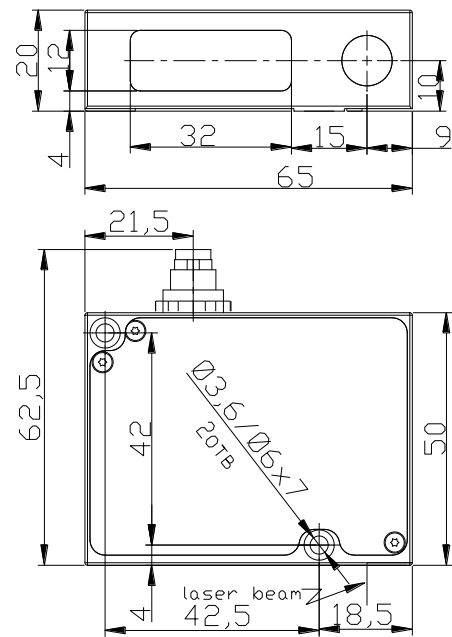


Figure 2.1. Sensor with connector (CC)

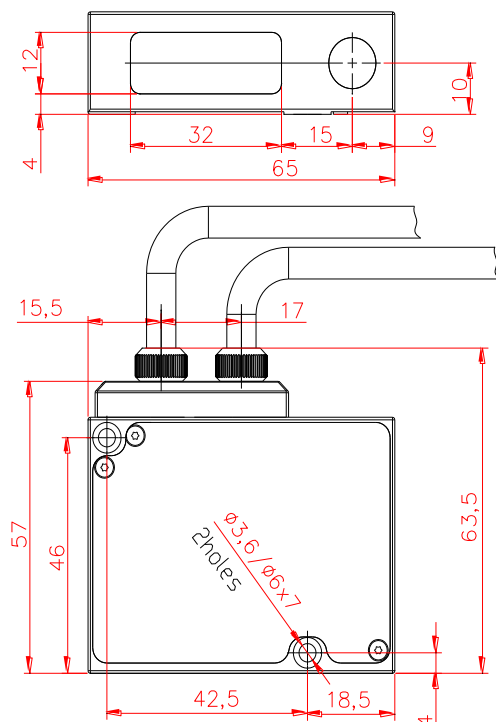


Figure 3. Sensor with two cable glands (CG)

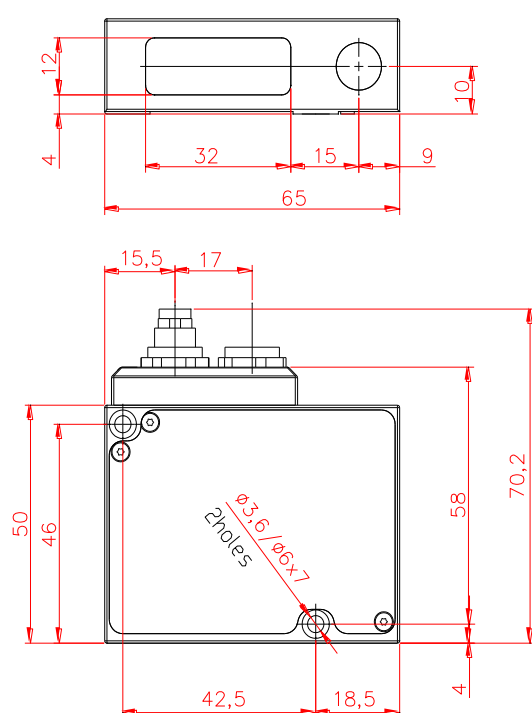


Figure 3.1. Sensor with two connector (CC)

8.2. Mounting of the sensors for mirror surface control

Fig. 4 shows the requirements for the mounting of the RF603-R-39/4 sensor for control of mirror objects and glass. The special mounting device is included into the shipping, figure 5.

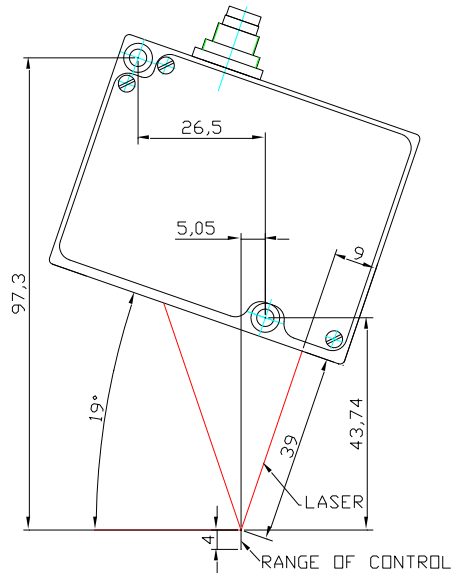


Figure 4

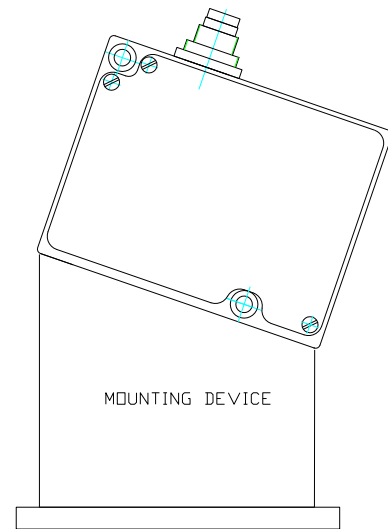


Figure 5

8.3. Overall demands for mounting

The sensor is positioned so that of object under control should place in this working range. In addition, no foreign objects should be allowed to stay on the path of the incident and reflected laser radiation. Necessary free space for the sensor mounting is shown in p. 19.3. Where objects to be controlled have intricate shapes and textures, the incidence of mirror component of the reflected radiation to the receiving window should be minimized.

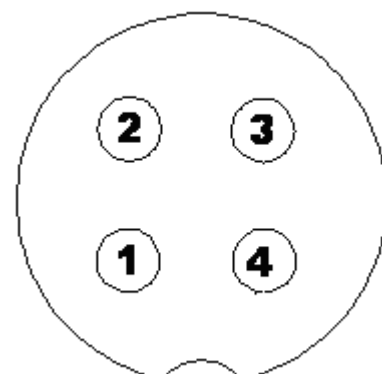
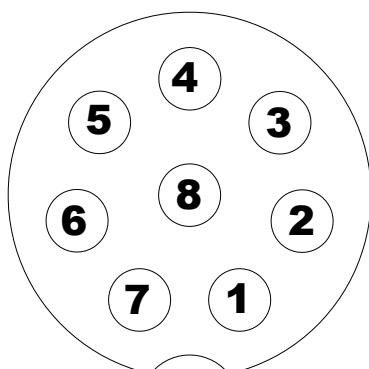
9. Connection

9.1. Designation of connector contacts

View from the side of connector contacts used in the sensor is shown in the following figures. One connector sensors have connector #1

Connector #1 (Binder 712 Series, #09-0427-80-08)

Connector #2 (Binder 712 Series, #09-0412-80-04)



Designation of contacts is given in the following tables:

Connector #1

Model of the sensor	Pin number	Assignment
(CAN/ET)-232-U/I-IN-AL	1	IN
	2	Gnd (power supply)
	3	TXD
	4	RXD
	5	Gnd (Common for signals)
	6	AL
	7	U/I
	8	Power U+
(ET)-485-U/I-IN-AL	1	IN
	2	Gnd (power supply)
	3	DATA+
	4	DATA-
	5	Gnd (Common for signals)
	6	AL
	7	U/I
	8	Power U+

Connector #2

Model of the sensor	Pin number	Assignment
ET	1	TX+
	2	TX-
	3	RX+
	4	RX-
CAN	1	CAN_H
	2	CAN_L
	3	
	4	GND

9.2. Cables

Designation of cable wires is given in the table below:

Cable #1

Model of the sensor	Pin number	Assignment	Wire color	
(CAN/ET)-232-U/I-IN-AL	free lead	-	Power U+	Red
	free lead	-	Gnd (power)	Brown
	DB9	2	TXD	Green
	DB9	3	RXD	Yellow
	free lead	-	U/I	Blue
	free lead	-	IN	White
	free lead	-	AL	Pink
	DB9	5	Gnd (Common for signals)	Gray
(ET)-485-U/I-IN-AL	free leads	Power U+	Red	
		Gnd (power)	Brown	
		DATA+	Green	
		DATA-	Yellow	
		U/I	Blue	
		IN	White	
		AL	Pink	
Gnd (Common for signals)	Gray			

Cable #2

Model of the sensor	Pin number	Assignment	Wire color
---------------------	------------	------------	------------

		1	TX+	White-orange
		2	TX-	Orange
		3	RX+	White-green
ET	RJ-45	4		
		5		
		6	RX-	Green
		7		
		8		
CAN	free leads		CAN_H CAN_L Gnd	White-orange Orange Green

10. Configuration parameters

The nature of operation of the sensor depends on its configuration parameters (operation modes), which can be changed only by transmission of commands through serial port RS232 or RS485. The basic parameters are as follows:

10.1. Time limit for integration

Intensity of the reflected radiation depends on the surface characteristic of objects under control. Therefore, output power of the laser and the time of integration of radiation incident onto the CMOS-array are automatically adjusted to achieve maximum measurement accuracy.

Parameter "time limit for integration" specifies maximum allowable time of integration. If the radiation intensity received by the sensor is so small that no reasonable result is obtained within the time of integration equal to the limiting value, the sensor transmits a zero value.

- Note 1.** The measurement frequency depends on the integration time of the receiving array. Maximum frequency (9,4 kHz) is achieved for the integration time $\leq 106 \mu\text{s}$ (minimum possible integration time is $0,1 \mu\text{s}$). As the integration time increases above $106 \mu\text{s}$, the result updating time increases proportionally.
- Note 2.** Increasing of this parameter expands the possibility of control of low-reflecting (diffuse component) surfaces; at the same time this leads to reduction of measurement frequency and increases the effects of exterior light (background) on the measurement accuracy. Factory setting of the limiting time of integration is $3200 \mu\text{s}$.
- Note 3.** Decreasing of this parameter lets to increase measurement frequency, but can decrease measurement accuracy.

10.2. Sampling mode

This parameter specifies one of the two result sampling options in the case where the sensor works in the data stream mode:

- Time Sampling;
- Trigger Sampling.

With Time Sampling selected, the sensor automatically transmits the measurement result via serial interface in accordance with selected time interval (sampling period).

With Trigger sampling is selected, the sensor transmits the measurement result when external synchronization input (IN input of the sensor) is switched and taking the division factor set into account.

10.3. Sampling period

If the Time Sampling mode is selected, the 'sampling period' parameter determines the time interval in which the sensor will automatically transmit the measurement

Result. The time interval value is set in increments of 0.01 ms. For example, for the parameter value equal to 100, data are transmitted through bit-serial interface with a period of $0,01 \cdot 100 = 1$ ms.

If the Trigger Sampling mode is selected, the 'sampling period' parameter determines the division factor for the external synchronization input. For example, for the parameter value equal to 100, data are transmitted through bit-serial interface when each 100th synchronizing pulse arrives at IN input of the sensor.

Note 1. It should be noted that the 'sampling mode' and 'sampling period' parameters control only the transmission of data. The sensor operation algorithm is so built that measurements are taken at a maximum possible rate determined by the integration time period, the measurement results is sent to buffer and stored therein until a new result arrives. The above-mentioned parameters determine the method of the readout of the result from the buffer.

Note 2. If the bit-serial interface is used to receive the result, the time required for data transmission at selected data transmission rate should be taken into account in the case where small sampling period intervals are used. If the transmission time exceeds the sampling period, it is this time that will determine the data transmission rate.

10.4. The point of zero

This parameter sets a zero point of absolute system of coordinates in any point within the limits of a working range. You can set this point by corresponding command or by connecting AL input to the ground line (this input must preliminarily be set to mode 3). When the sensor is fabricated, the base distance is set with a certain uncertainty, and, if necessary, it is possible to define the point zero more accurately.

10.5. Line AL operation mode

This line can work in one of the four modes defined by the configuration parameter value:

- mode 1: indication of run-out beyond the range ("0" – object is beyond the range (beyond the selected window in the range), "1" – object is within the range (within the selected window in the range);
- mode 2: mutual synchronization of two or more sensors;
- mode 3: hardware zero-set line;
- mode 4: hardware laser switch OFF/ON

In the "Indication of run-out beyond the range" mode, logical "1" occurs on the AL line if an object under control is located within the working range of the sensor (within the selected window in the range), and logical "0" occurs if the object is absent in the Working range (within the selected window). For example, in such mode this line can be used for controlling an actuator (a relay) which is activated when the object is present (absent) within the selected range (Fig.6.1).

The "Mutual synchronization" mode makes it possible to synchronize measurement times of two and more sensors. It is convenient to use this mode to control one object with several sensors, e.g., in the measurement of thickness. On the hardware level, synchronization of the sensor is effected by combining AL lines (Fig.6.2.).

In the "Hardware zero-set" mode connection AL input to the ground potential sets beginning of coordinates into current point (Fig.6.3.).

In the "Hardware laser switch OFF/ON" mode connection AL input to the ground potential switch laser ON/OFF (Fig.6.3)

Out of the range indication

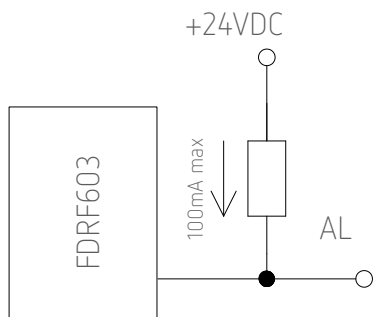


Figure 6.1

Mutual synchronization

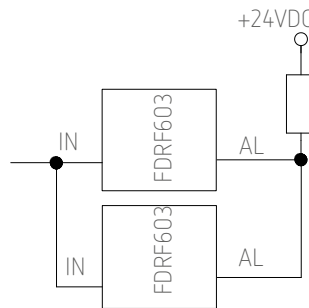


Figure 6.2

Hardware zero-set/
Hardware laser ON/OFF

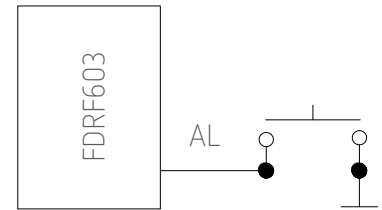


Figure 6.3

10.6. Time lock of the result

If the sensor does not find out object or if the authentic result cannot be received, zero value is transferred. The given parameter sets time during which is transferred the last authentic result instead of zero value.

10.7. Method of results averaging

This parameter defines one of the two methods of averaging of measurement results implemented directly in the sensor:

- Averaging over a number of results
- Time averaging

When averaging over a number of results is selected, sliding average is calculated. When time averaging is selected, the results obtained are averaged over the time interval chosen.

10.8. Number of averaged values/time of averaging

This parameter specifies the number of source results to be averaged for deriving the output value or time of the averaging .

The use of averaging makes it possible to reduce the output noise and increase the sensor resolution.

Averaging over a number of results does not affect the data update in the sensor output buffer.

In case of time averaging, data in the output buffer are updated at a rate equal to the averaging period.

Note. Maximum parameters value is 127.

10.9. Factory parameters table

The sensors are supplied with the parameters shown in the table below:

Parameter	Value
Time limit for integration	3200 (3,2 ms)
Sampling mode	time
Sampling period	5000 (5 ms)
Point of zero	Beginning of the range
Line AL operation mode	1
Time lock of the result	5 ms

Method of results averaging

Over a number of results

Number of averaged values

1

The parameters are stored in nonvolatile memory of the sensor. Correct changing of the parameters is carried out by using the parameterization program supplied with the sensor or a user program.

11. Description of RS232 and RS485 interfaces

11.1. RS232 port

The RS232 port ensures a "point-to-point" connection and allows the sensor to be connected directly to RS232 port of a computer or controller.

11.2. RS485 port

In accordance with the protocol accepted and hardware capability, the RS485 port makes it possible to connect up to 127 sensors to one data collection unit by a common bus circuit.

11.3. Modes of data transfer

Through these serial interfaces measurement data can be obtained by two methods:

- by single requests (inquiries);
- by automatic data streaming (stream).

11.4. Configuration parameters

11.4.1. Rate of data transfer through serial port

This parameter defines the rate of data transmission via the bit-serial interface in increments of 2400 bit/s. For example, the parameter value equal to 4 gives the transmission rate of $2400 \times 4 = 9600$ bit/s.

Note. The maximum transmission rate for RS232 interface is 460,8 kbit/s, and for RS485 interface the rate is 921,6 kbit/s

11.4.2. Net address

This parameter defines the network address of the sensor equipped with RS485 interface.

Note. Network data communications protocol assumes the presence of 'master' in the net, which can be a computer or other information-gathering device, and from 1 to 127 'slaves' (RF603 Series sensors) which support the protocol.

Each 'slave' is assigned a unique network identification code – a device address.

The address is used to form requests or inquiries all over the net. Each slave receive inquiries containing its unique address as well as '0' address which is broadcast-oriented and can be used for formation of generic commands, for example, for simultaneous latching of values of all sensors and for working with only one sensor (with both RS232 port and RS485 port).

11.4.3. Factory parameters table

Parameter	Value
Baud rate	9600 bit/s
Net address	1
Mode of data transfer	request

11.5. Interfacing protocol

11.5.1. Serial data transmission format

Data message has the following format:

1 start-bit	8 data bits	1 even bit	1 stop-bit
-------------	-------------	------------	------------

11.5.2. Communication sessions types

The communications protocol is formed by communication sessions, which are only initiated by the 'master' (PC, controller). There are two kinds of sessions with such Structures:

- 1) "request", ["message"] — ["answer"], square brackets include optional elements
- 2) "request" — "data stream" — ["request"].

11.5.3. Request

"Request" (INC) — is a two-byte message, which fully controls communication session. The 'request' message is the only one of all messages in a session where most significant bit is set at 0, therefore, it serves to synchronize the beginning of the session. In addition, it contains the device address (ADR), code of request (COD) and, optional, the message [MSG].

"Request" format:

Byte 0	Byte 1	[Bytes 2...N]
INC0(7:0)	INC1(7:0)	MSG
0 ADR(6:0)	1 0 0 0 COD(3:0)	

11.5.4. Message

"Message" is data burst that can be transmitted by 'master' in the course of the session.

All messages with a "message" burst contain 1 in the most significant digit. Data in a message are transferred in tetrads. When byte is transmitted, lower tetrad goes first, and then follows higher tetrad. When multi-byte values are transferred, the transmission begins with lower byte.

The following is the format of two 'message' data bursts for transmission of byte:

DAT(7:0)									
Byte 0					Byte 1				
1	0	0	0	DAT(3:0)	1	0	0	0	DAT(7:4)

11.5.5. Answer

"Answer" is data burst that can be transmitted by 'slave' in the course of the session.

All messages with a message burst contain 1 in the most significant digit. Data in a message are transferred in tetrads. When byte is transmitted, lower tetrad goes first, and then follows higher tetrad. When multi-byte values are transferred, the transmission begins with lower byte.

When 'answer' is transmitted, the message contains:

- SB-bit, characterizes the updating of the result. If SB is equal to "1" this means that the sensor has updated the measurement result in the buffer, if SB is equal to "0" - then non-updated result has been transmitted (see. Note 1, p.10.3.). SB=0 when parameters transmit;
- two additional bits of cyclic binary batch counter (CNT). Bit values in the batch counter are identical for all sendings of one batch. The value of batch

counter is incremented by the sending of each burst and is used for formation (assembly) of batches or bursts as well as for control of batch losses in receiving data streams.

The following is the format of two 'answer' data bursts for transmission of byte:

DAT(7:0)							
Byte 0				Byte 1			
1	SB	CNT(1:0)	DAT(3:0)	1	SB	CNT(1:0)	DAT(7:4)

11.5.6. Data stream

'Data stream' is an infinite sequence of data bursts or batches transmitted from 'slave' to 'master', which can be interrupted by a new request. In transmission of 'data stream' one of the 'slaves' fully holds data transfer channel, therefore, when 'master' produces any new request sent to any address, data streaming process is stopped. Also, there is a special request to stop data streaming.

11.5.7. Output Rate

Output rate, "OR" depends on Baud rate of serial interface, "BR", and is calculated by such a manner:

$$OR = 1 / (44 / BR + 1 * 10^{-5}) \text{ Hz.}$$

For example, for BR=460800 b/s, Output Rate = 9,4 kHz

11.5.8. Request codes and list of parameters

Request codes and list of parameters are presented in Chapter 15.

12. Description of CAN interface

CAN interface is used only for the reception of data from the sensor. Parameterization of sensors is carried out via RS232 interface.

12.1. Modes of data transfer

The sensor can operate in the following modes:

- No transmission
- The request mode. In this mode, each sensor receives a frame of remote data request (Remote Frame) containing frame identifier, and responds by sending a data frame (Data Frame) with the same identifier.
- Automatic data streaming mode. When operating in this mode, each sensor automatically transmits a data frame (Data frame) together with its identifier in accordance with a sampling mode of Time or Trigger (see p.10.2.) and corresponding sampling period (see p.10.3.)

12.2. Configuration parameters

12.2.1. Data transmission rate via CAN interface

This parameter defines data transmission rate through CAN interface in increments of 5000 bit/s. For example, the parameter value of 50 gives the transmission rate of $5000 * 50 = 250000$ bit/s.

Note. Maximum transmission rate via CAN interface is 1 Mbit/s.

12.2.2. Identifiers

The sensor equipped with CAN 2.0B port supports data exchange using standard frames (with 11-bit identifiers) and extended frames (with 29-bit identifiers). Each

sensor is set with standard or extended identifier which is unique for a network given. The number of sensors in the network is up to 112.

12.2.3. Factory parameters table

Parameter	Value
Data transmission rate	125 kb/s
Standard identifier	7FFh
Extended identifier	1FFFFFFh
Interface condition	ON
Mode of data transfer	request

12.2.4. Format of transmitted data

The sensor transmits 8 byte long frame:

- byte 0: type of device
- byte 1: = 0 - reserved
- byte 2: low byte of serial number
- byte 3: high byte of serial number
- byte 4: low byte of operating range
- byte 5: high byte of operating range
- byte 6: low byte of the result
- byte 7: high byte of the result

Calculation of the result is made according to formula (1), (see par. 15.3)

13. Description of Ethernet interface

Ethernet interface is used only for the reception of data from the sensor. Parameterization of sensors is carried out via RS232 or RS485 interface.

13.1. Modes of data transfer

The sensor can be operated in the following modes:

- No transmission.
- Automatic data streaming mode. At the beginning, the internal data transmission buffer of the sensor is filled with measurement data in accordance with a selected sampling mode of Time or Trigger (see p.10. 2.) and corresponding sampling period (see p.10.3.). After the internal buffer has been filled (buffer size is 168 measurements), the sensor transmits data packet accumulated in the transmission buffer to UDP network.

13.2. Factory parameters table

Parameter name	Value
Destination IP Address	255.255.255.255
Gateway IP address	192.168.0.1
Subnet Mask	255.255.255.255
Source IP address	192.168.0.3
Interface condition	ON
Mode of data transfer	stream

13.3. Data packet format

The sensor sends 512 byte data packet to IP port 6003:

- byte 0, byte 1: 1st measurement
- byte 2, : status word for the 1st measurement
- byte 3, byte 4: 2nd measurement
- byte 5, : status word for the 2nd measurement

-
- byte 501, byte 502: 168th measurement
 - byte 503, : status word for the 168th measurement
 - byte 504, byte 505: serial number of the sensor
 - byte 506, byte 507: base distance
 - byte 508, byte 509: measurement range
 - byte 510, : cyclic counter of packet number
 - byte 507, byte 508: reserved
 - byte 509, byte 510: reserved
 - byte 511, : packet checksum

13.4. Data structure

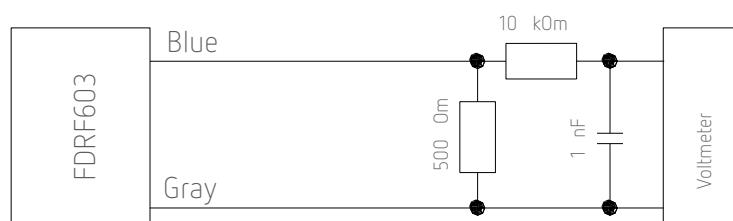
- The result of measurement is transmitted as a 16-bit word and calculation of the result is performed according to formula (1), see par. 16.3.
- The status word size is 1 byte. The bit status "0" characterizes the updating of the result. If the bit equal to "1", this means that the sensor has updated the measurement result by the time of arrival of the external synchronization pulse (beginning of a new sampling period). If the bit is equal to "0", then non-updated result has been transmitted. The bits 7...1 of the status word are reserved and equal to "0";
- The base distance of the sensor is transmitted as a 16-bit word with discreteness of 1 mm
- The sensor measurement range is transmitted as a 16-bit word with discreteness of 1 mm;
- Cyclic counter of packet number has a one-byte size. The counter value is incremented with transmission of each packet and is used to control packet loss in the course of data reception;
- The packet checksum has a one-byte size and is calculated as XOR of all the bytes of packet

14. Analog outputs

Changing of the signal at analog output occurs in synchronism with the changing of the result transferred through the bit-serial interface

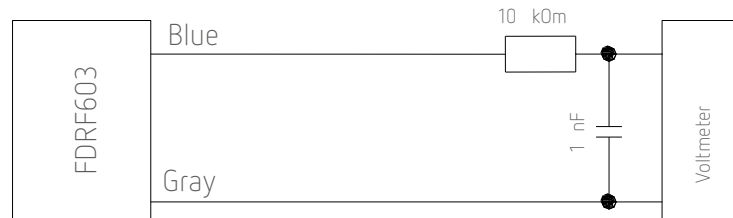
14.1. Current output 4...20 mA

The connection scheme is shown in the figure. The value of load resistor should not be higher than 500 Ohm. To reduce noise, it is recommended to install RC filter before the measuring instrument. The filter capacitor value is indicated for maximum sampling frequency of the sensor (9,4 kHz) and this value increases in proportion to the frequency reduction.



14.2. Voltage output

The connection scheme is shown in the figure. To reduce noise, it is recommended to install RC filter before the measuring instrument. The filter capacitor value is indicated for maximum sampling frequency of the sensor (9,4 kHz) and this value increases in proportion to the frequency reduction.



14.3. Configuration parameters

14.3.1. Range of the analog output

While working with the analog output, resolution can be increased by using the 'Window in the operating range' function which makes it possible to select a window of required size and position in the operating range of the sensor within which the whole range of analog output signal will be scaled.

If the beginning of the range of the analog signal is set at a higher value than the end value of the range, this will change the direction of rise of the analog signal.

Note. If the beginning of the range of the analog signal is set at a higher value than the end value of the range, this will change the direction of rise of the analog signal.

14.3.2. Analog output operation mode

When using 'window in the operating range' function, this mode defines the analog output operation mode.

Analog output can be:

- in the window mode or
- in the full mode.

"Window mode". The entire range of the analog output is scaled within the selected window. Outside the window, the analog output is "0".

"Full mode". The entire range of the analog output is scaled within the selected Window (operating range). Outside the selected window, the whole range of the analog output is automatically scaled onto the whole operating range of the sensor (sensitivity range).

14.4. Factory parameters table

Range of the analog output	Measuring range of sensor
Analog output operation mode	Window

15. Request codes and list of parameters

15.1. Request codes table

Request	Description	Message	Answer
01h	Device identification	—	– device type (1) – firmware release (1) – serial number (2) – base distance (2)

			- range	(2)
02h	Reading of parameter	- code of parameter (1)	- value of parameter (1)	
03h	Writing of parameter	- code of parameter (1) - value of parameter (1)	—	
04h	Storing current parameters to FLASH-memory	- constant AAh (1)	- constant AAh (1)	
04h	Recovery of parameter default values in FLASH-memory	- constant 69h (1)	- constant 69h (1)	
05h	Latching of current result	—	—	
06h	Inquiring of result	—	- result (2)	
07h	Inquiring of a stream of results	—	- stream of results (2)	
08h	Stop data streaming	—	—	

15.2. List of parameters

Code of parameter	Name	Values
00h	Sensor ON	1 — laser is ON, measurements are taken (default state); 0 — laser is OFF, sensor in power save mode
01h	Analog output ON	1/0 — analog output is ON/OFF; if a sensor has no analog output, this bit will remain in 0 despite all attempts of writing 1 into it.
02h	Averaging, sampling and AL output control	x,x,M,C,M1,M0,R,S – control byte which determines averaging mode – bit M, CAN interface mode - bit C, logical output mode - bit M1, analog output mode - bit R, and sampling mode - bit S; bites x – do not use; bit M: 0 — quantity sampling mode (by default); 1 — time sampling mode bit C: 0 – request mode of CAN interface (by default); 1 – synchronization mode of CAN interface. bit M1 and M0: 00 – out of the range indication (by default); 01 – mutual synchronization mode. 10 – hardware zero set mode 11 – laser turn OFF/ON bit R: 0 – window mode (default); 1 – full range. bit S: 0 – time sampling (default) 1 – trigger sampling.
03h	Network address	1...127 (default — 1)
04h	Rate of data transfer through serial port	1...192, (default — 4) specifies data transfer rate in increments of 2400 baud; e.g., 4 means the rate of 42400=9600baud. (NOTE: max baud rate = 460800)
05h	Reserved	
06h	Number of averaged values	1...128, (default — 1)
07h	Reserved	
08h	Lower byte of the sampling period	1) 10...65535, (default — 500)
09h	Higher byte of the sampling period	the time interval in increments of 0.01 ms with which sensor automatically communicates of results on streaming request (priority of sampling = 0); 2) 1..65535, (default — 500) divider ratio of trigger input with which sensor automatically communicates of result on streaming request (priority of sampling = 1)
0Ah	Lower byte of maximum integration time	2...65535, (default — 200) specifies the limiting time of integration by CMOS-array in increments of 1mks
0Bh	Higher byte of maximum integration time	
0Ch	Lower byte for the beginning of analog output range	0...4000h, (default — 0) specifies a point within the absolute range of transducer where the analog output has a minimum value

0Dh	Higher byte for the beginning of analog output range	
0Eh	Lower byte for the end of analog output range	0...4000h, (default — 4000h)) specifies a point within the absolute range of transducer where the analog output has a maximum value
0Fh	Higher byte for the end of analog output range	
10h	Time lock of result	0...255, specifies of time interval in increments of 5 m
11...16h	Reserved	
17h	Lower zero point	0...4000h, (default — 0) specifies beginning of absolute coordinate system.
18h	Higher byte zero point	
19...1Ch	Reserved	
20h	Data transfer rate via CAN interface	10...200, (by default — 25) specifies data transmission rate in increments of 5 000 baud, for example, the value of 50 gives the rate of 50*5 000= 250 000 baud.
22h	Low byte of standard identifier	0...7FFh,(by default — 7FFh) specifies standard CAN identifier
23h	High byte of standard identifier	
24h	0th byte of extended identifier	0...1FFFFFFFh, (by default — 1FFFFFFFh) specifies extended CAN identifier CAN
25h	1 st byte of standard identifier	
26h	2 nd byte of extended identifier	
27h	3 rd byte of standard identifier	
28h	CAN interface identifier	1 — extended identifier; 0 — standard identifier .
29h	CAN interface ON/OFF	1 — CAN interface ON; 0 — CAN interface OFF.
6Ch	0th byte of Destination IP Address	by default — FFFFFFFFh = 255.255.255.255
6Dh	1 st byte of Destination IP Address	
6Eh	2 nd byte of Destination IP Address	
6Fh	3 rd byte of Destination IP Address	
70h	0th byte of Gateway IP Address	by default — C0A80001h = 192.168.0.1
71h	1 st byte of Gateway IP Address	
72h	2 nd byte of Gateway IP Address	
73h	3 rd byte of Gateway IP Address	
74h	0th byte of Subnet Mask	by default — FFFFFFF0h = 255.255.255.0
75h	1 st byte of Subnet Mask	
76h	2 nd byte of Subnet Mask	
77h	3 rd byte of Subnet Mask	
78h	0th byte of Source IP Address	by default — C0A80003h = 192.168.0.3
79h	1 st byte of Source IP Address	
7Ah	2 nd byte of Source IP Address	
7Bh	3 rd byte of Source IP Address	
88h	ETHERNET interface ON/OFF	0 — ETHERNET interface OFF; 1 — ETHERNET interface ON (UDP protocol)

15.3. Notes

- All values are given in binary form.
- Base distance and range are given in millimeters.
- The value of the result transmitted by a sensor (D) is so normalized that 4000h (16384) corresponds to a full range of the sensor (S in mm), therefore, the result in millimeters is obtained by the following formula:

$$X=D*S/4000h \text{ (mm)} \quad (1).$$

- On special request (05h), the current result can be latched in the output buffer where it will be stored unchanged up to the moment of arrival of request for

data transfer. This request can be sent simultaneously to all sensors in the net in the broadcast mode in order to synchronize data pickup from all sensors.

- When working with the parameters, it should be borne in mind that when power is OFF the parameter values are stored in nonvolatile FLASH-memory of the sensor. When power is ON, the parameter values are read out to RAM of the sensor. In order to retain these changes for the next power-up state, a special command for saving current parameter values in the FLASH-memory (04h) must be run.
- Parameters with the size of more than one byte should be saved starting from the high-order byte and finishing with the low-order byte.

15.4. Examples of communication sessions

1) Request "Device identification".

Condition: device address — 1, request code — 01h, device type — 61, firmware release — 88 (58h), serial number — 0402 (0192h), base distance — 80mm (0050h), measurement range — 50mm (0032h), packet number — 1.

The request format:

Byte 0		Byte 1				[Bytes 2...N]
INCO(7:0)		INC1(7:0)				MSG
0	ADR(6:0)	1	0	0	0	COD(3:0)

Request from "Master"

Byte 0								Byte 1							
INCO(7:0)								INC1(7:0)							
0	0	0	0	0	0	0	1	1	0	0	0	0	0	0	1
01h								81h							

The following is the format of two 'answer' data bursts for transmission of byte DAT(7:0):

DAT(7:0)							
Byte 0				Byte 1			
1	0	CNT(1:0)	DAT(3:0)	1	0	CNT(1:0)	DAT(7:4)

Answer of "Slave":

Device type:

DAT(7:0)															
Byte 0							Byte 1								
1	0	0	1	0	0	0	1	1	0	0	1	0	1	1	0
91h							96h								

Firmware release

DAT(7:0)															
Byte 0							Byte 1								
1	0	0	1	1	0	0	0	1	0	0	1	0	1	0	1
98h							95h								

Serial Number

DAT(7:0)															
Byte 0							Byte 1								
1	0	0	1	0	0	1	0	1	0	0	1	1	0	0	1
92h							96h								
DAT(7:0)															
Byte 0							Byte 1								
1	0	0	1	0	0	0	1	1	0	0	1	0	0	0	0
91h							90h								

Base distance

DAT(7:0)															
Byte 0								Byte 1							
1	0	0	1	0	0	0	0	1	0	0	0	1	0	1	0
90h								95h							

DAT(7:0)															
Byte 0								Byte 1							
1	0	0	1	0	0	0	0	1	0	0	0	0	0	0	0
90h								90h							

Measurement range

DAT(7:0)															
Byte 0								Byte 1							
1	0	0	1	0	0	1	0	1	0	0	1	0	0	1	1
92h								93h							

DAT(7:0)															
Byte 0								Byte 1							
1	0	0	1	0	0	0	0	1	0	0	0	0	0	0	0
90h								90h							

Note: as bust number =1, then CNT=1

2) Request "Reading of parameter".

Condition: device address — 1, request code — 02h, code of parameter — 05h, value of parameter — 04h, packet number — 2.

Request ("Master") — 01h;82h;

Message ("Master") — 85h, 80h;

Answer ("Slave") — A4h, A0h

3) Request "Inquiring of result".

Condition: device address — 1, result — 02A5h, packet number — 3.

Request ("Master") — 01h;86h;

Answer ("Slave") — B5h, BAh, B2h, B0h

Measured distance (mm) (for example, range of the sensor= 50 mm):

$$X=677(02A5h)*50/16384 = 2.066 \text{ mm}$$

4) Request "writing sampling regime (trigger sampling)".

Condition: device address — 1, request code — 03h, code of parameter — 02h, value of parameter — 01h.

Request ("Master") — 01h, 83h;

Message ("Master") — 82h, 80h, 81h, 80h;

5) Request: "writing the divider ration"

Condition: divider ration — 1234=3039h, device address — 1, request code — 03h, code of parameter — 09h (first or higher byte), value of parameter — 30h

Request ("Master") — 01h, 83h

Message ("Master") — 89h, 80h, 80h, 83h

and for lower byte, code of parameter — 08h, value of parameter — 39h

Request ("Master") — 01h, 83h

Message ("Master") — 88h, 80h, 89h, 83h

16. Parameterization program

16.1. Function

The FDRF60X-SP-2.0 software is intended for:

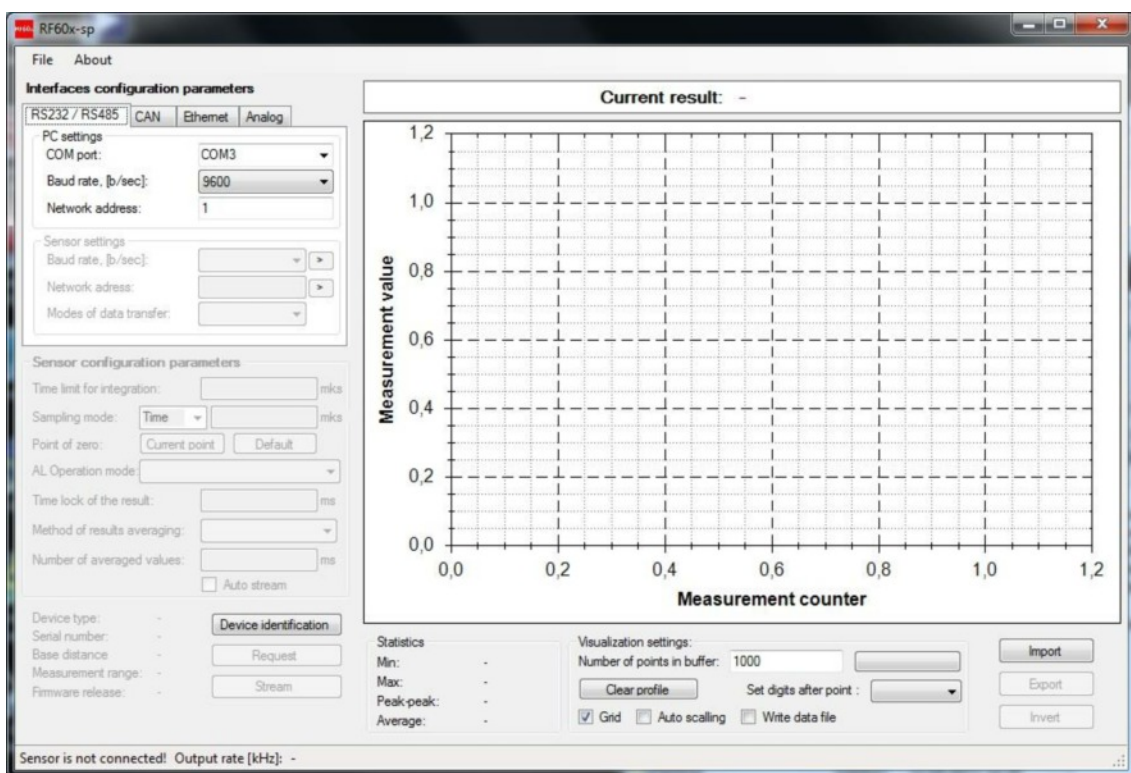
- 1) Testing and demonstration of work of FDRF603 series sensors;
- 2) Setting of the sensor parameters;
- 3) Reception and gathering of the sensor data signals

16.2. Program setup

Start file RF603setup.exe and follow instructions of the installation wizard

16.3. Obtaining connection to sensor (RS232/RS485)

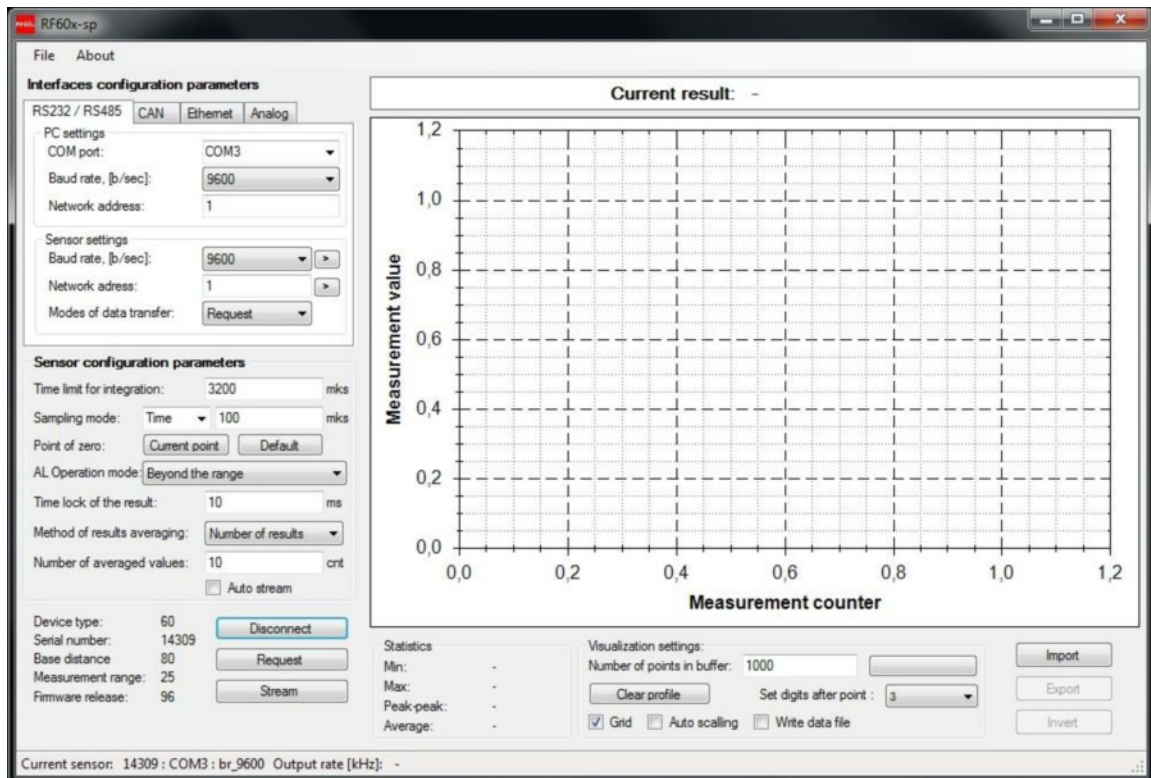
Once the program is started, the pop-up window emerges:



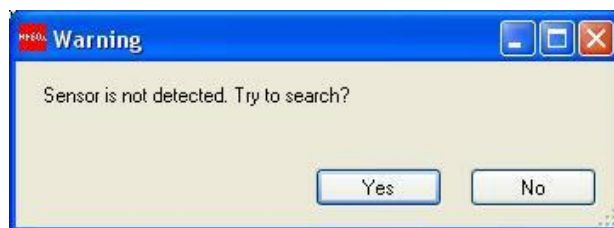
To obtain connection via RS232/RS485 interfaces, go to RS232/RS485 PC settings in the Interface configuration parameters panel:

- select COM-port whereto the sensor is connected (logical port if the sensor is connected via USB-adapter)
- select transmission rate (Baud rate) at which the sensor will work
- select the sensor network address, if necessary
- press the Device identification button.

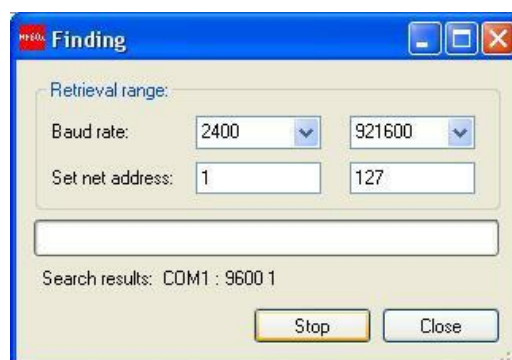
If the selected parameters correspond to the parameters of the sensor interface, the program will identify the sensor, read and display its configuration parameters:



If connection is not established, a prompt will appear asking to make automatic search of the sensor:



To start search, press the Yes button



- set the range of transmission rate search in the Baud rate line
- set the range of network address search in the Net address line
- press the Search button

The program will perform automatic search of the sensor by searching over possible rates, network addresses and COM-ports of PC.

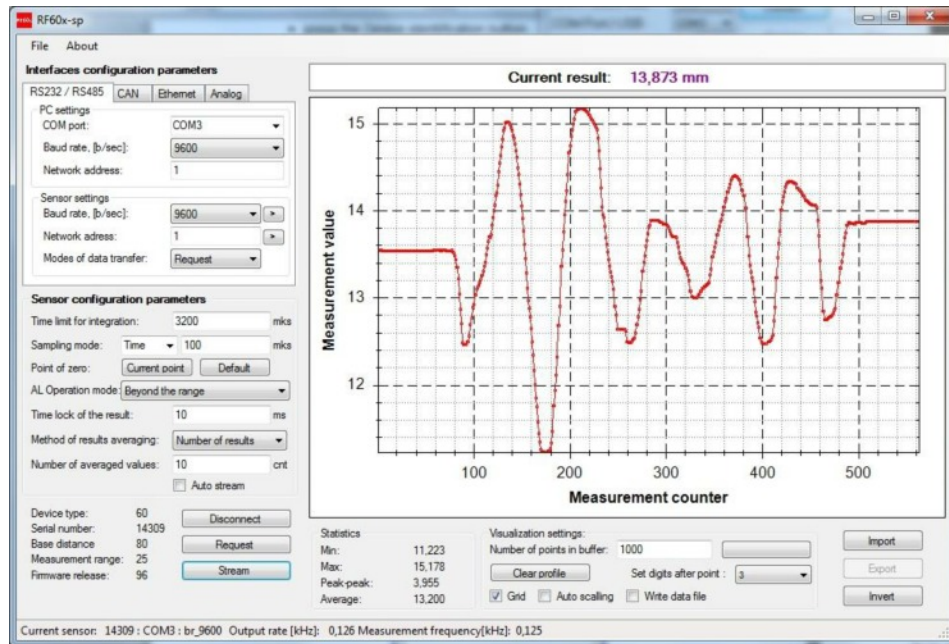
16.4. Checking of the sensor operability

Once the sensor is successfully identified, check its operability as follows.

- place an object inside the sensor working range

- by pressing the Request button, obtain the result of one measurement on the (Current result) indicator. The 06h request type is realized (see par. 15.1).
- pressing the Stream button will switch the sensor to the data stream transmission mode. The 07h request type is realized (see par. 15.1).
- by shifting the object, observe changes in the readings.
- the status line in the lower part of the window will show current data transmission and refreshing rates.

Pressing of the Stop stream button will stop data transmission



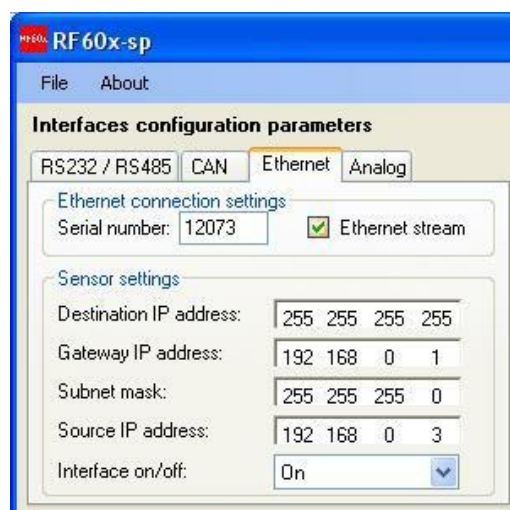
16.5. Connection through Ethernet interface

For data reception via Ethernet-interface:

- tick Ethernet stream in the Ethernet tab
- if there are several sensors in the network, write in the Serial number field a serial number of the sensor from which data have to be received
- press the Stream button

Note 1. If the Serial number field is empty, the program will work with the sensor from which data came first

Note 2. If Ethernet stream is not selected (ticked) while the sensor is connected also via RS232/RS485, then data will be received through the latter interface.



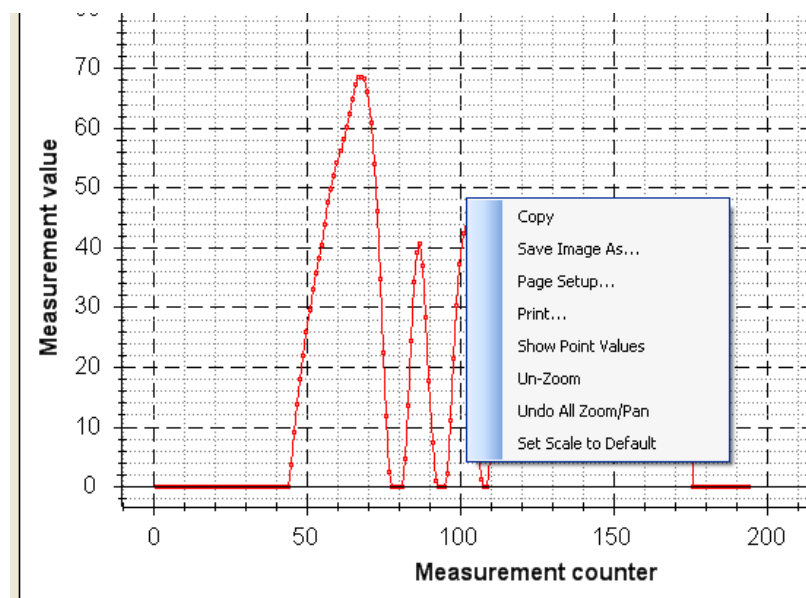
16.6. Display, gathering and scanning of data

Measurement result is displayed in digital form and in the form of oscillogram and is stored in the PC memory.

- the number of points displayed along the X co-ordinate can be set in the Number of points in buffer window;
- scaling method along the Y co-ordinate can be set by the Auto scaling function;
- turn-on/turn-off of the scaling grid is effected by using the Grid function;
- the number of displayed digits after decimal point can be set in the Set window;
- to save received data to a file, select (tick) Write data file;

Note: the number of points displayed on the graph depends on PC speed and becomes smaller in proportion to the data transmission rate. After the stream is stopped by using the Stop Stream button, the graph will display all data received.

- to work with the image, click the right mouse key on the graph to call the corresponding menu:

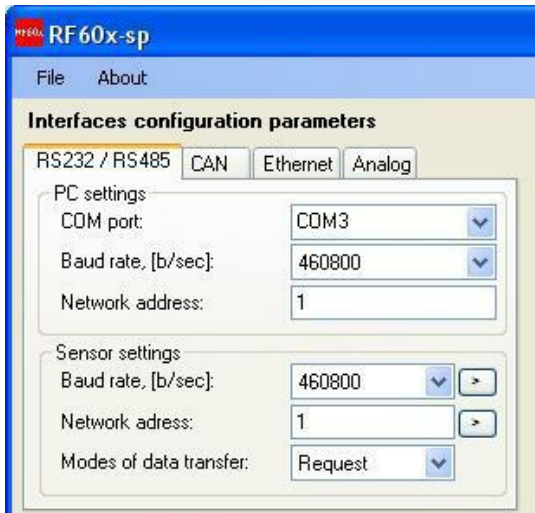


- to move the image, just press the mouse wheel
- to zoom, rotate the mouse wheel
- to save data to a file, press the Export button. The program will offer saving of data in two possible formats: internal and Excel.
- to scan or look at previously saved data, press the Import button and select the required file.

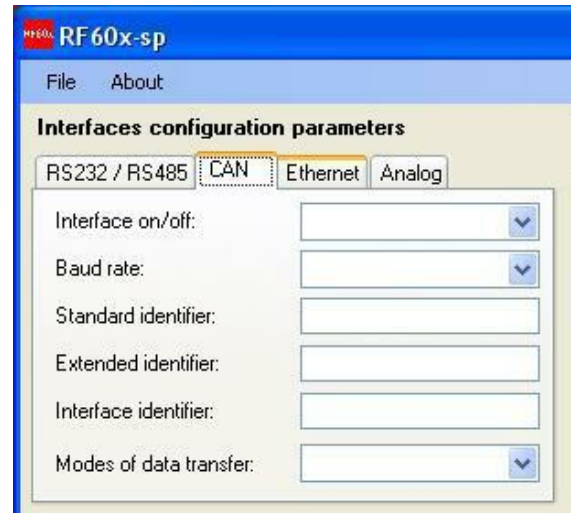
16.7. Setting and saving parameters of the sensor

16.7.1. Setting parameters

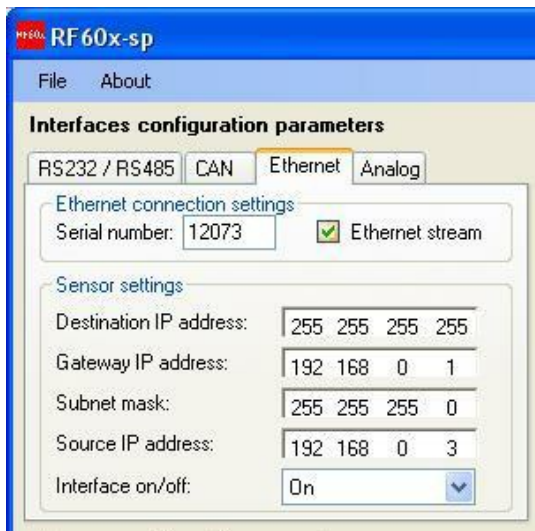
Parameterization of the sensor is only effected through RS232 or RS485 interfaces. Setting of parameters for all interfaces can be done using the respective tabs on the Interfaces configuration parameters panel:



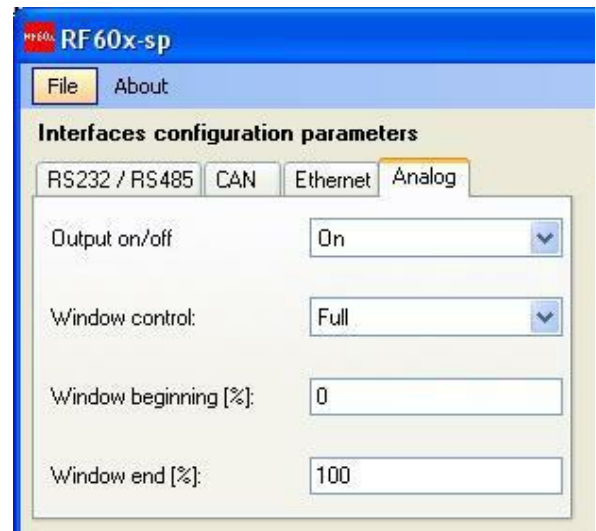
Setting RS232/RS485



Setting CAN

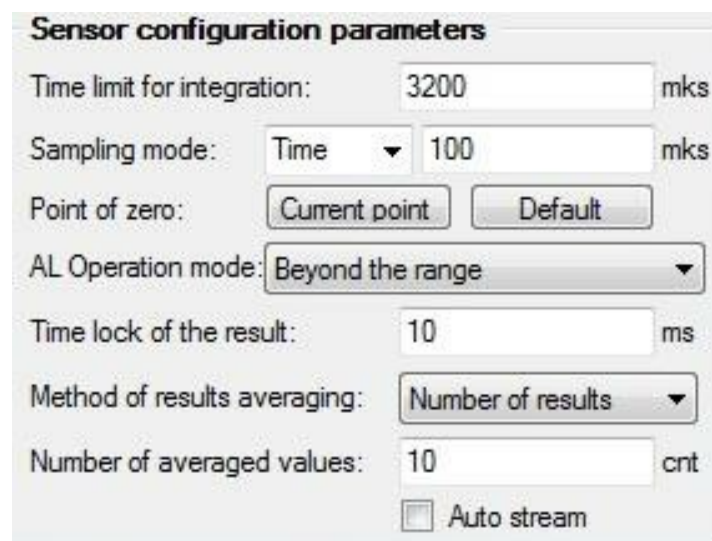


Setting Ethernet



Setting analog outputs

Setting of all configuration parameters of the sensor is possible with the help of the respective panel (Sensor configuration parameters):




16.7.2. Automatic data stream mode after power switch on

By default, after power supply switch on the sensor is waiting for request result command. To get continuous data stream after power supply switch on mark Auto stream box. Save parameters (see below). Now with any subsequent activation of the sensor it will work in data stream mode.

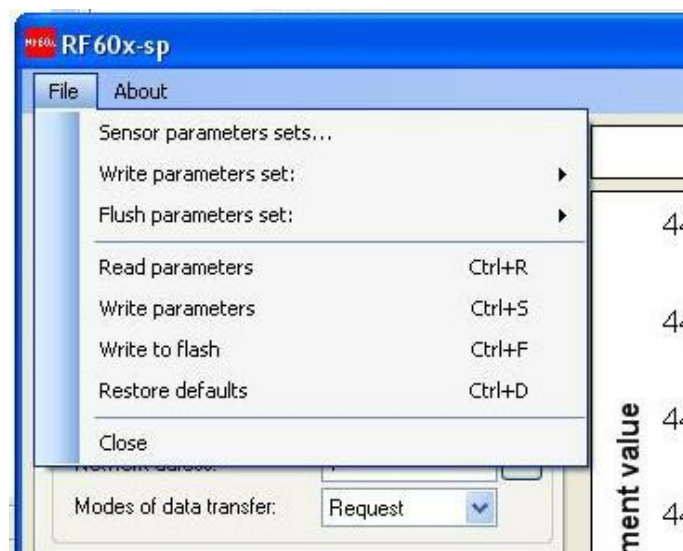
16.7.3. Saving parameters

- after setting one or several parameters as required, it is necessary to write them into the sensor memory, this is done by executing File>Write parameters.

Note: a special key  is offered for fast writing of parameters of the RS232/RS485 interfaces;

- perform testing of the sensor operation with new parameters;
- to store new parameters in nonvolatile memory, execute File>Write to flash.

Now, with any subsequent activation of the sensor it will work in the configuration you have selected.



16.7.4. Saving and writing a group of parameters

Parameters of the sensor can be saved to a file. This is done by selecting File>Write parameters set and saving the file in the window offered.

To call a group of parameters from a file, select File>Sensor parameters sets..., and select the file required. Note: these functions are convenient to use if it is necessary to write identical parameters to several sensors.

16.7.5. Recovery of default parameters

To restore the sensor parameters set by default, use File>Restore defaults.

17. RFSDK.

To work with the laser sensors, we offer a RFSDK library which is available on request. RFSDK contains API to work with all products of our company, documentation on classes and methods, examples and wrappers for various program languages. RFSDK allows users to develop their own software products without going into details of data communication protocol for the sensor.

Software	Description
Service program (parameterization program)	User software for work with laser sensors, parameter setting, and data acquisition
FDRF Device Software Development Kit	Designed for work with all similar devices. Includes: <ul style="list-style-type: none"> Support of MSVC and BorlandC for Windows, Linux, Wrapper C#, Wrapper Delphi. Examples for C#, Delphi, LabView, Matlab

Firmware Includes:

- Firmware for FDRF603 sensors

18. Appendix

18.1. Protective housing

Air-cooled protective housing can be used when operating sensor under conditions of elevated temperatures and high pollution levels. Overall and mounting dimensions of the housing are shown in Fig. 7. Basic requirements:

- Temperature of pressed air at the sensor input <math><25^{\circ}\text{C}</math>
- Air must be clear of oil and moisture
- Maximum allowable ambient temperature 120°C for air pressure of 6 atm.
- The sensor is calibrated directly in the housing, therefore if the device is used without housing linearity of characteristics is lost.

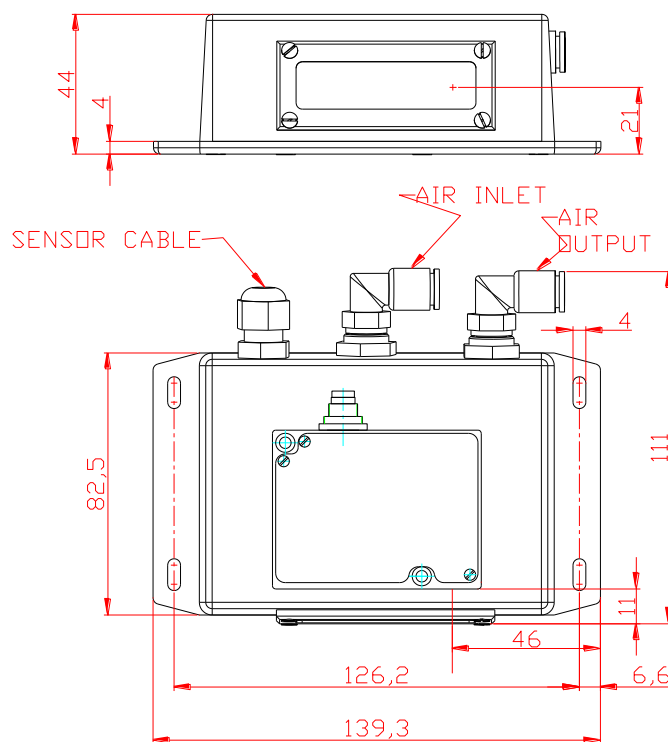


Figure 7

18.2. Spray guard

The spray guard is intended to reduce dirtying of the sensor windows. Overall dimensions are shown in Fig. 8

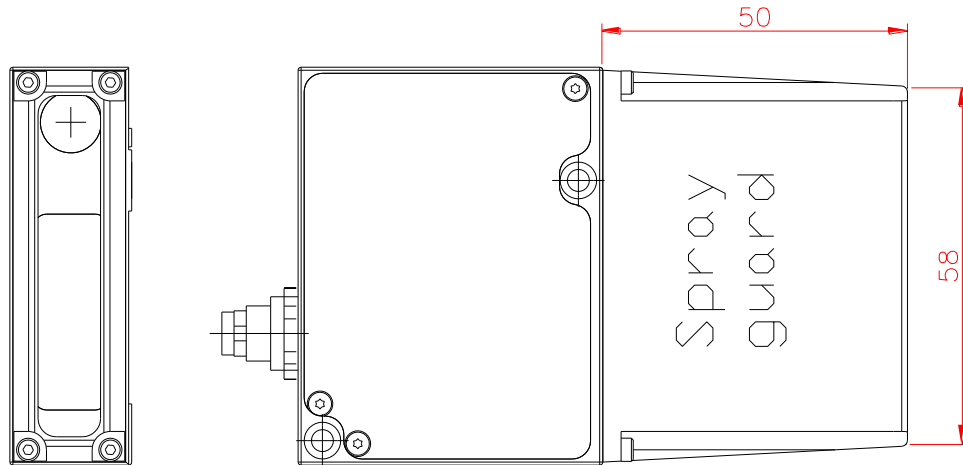


Figure 8

18.3. Size of the laser spot and mounting space

The laser spot dimensions for two device modifications (elliptical spot and round spot) as well as parameters characterizing required space for the passing of laser beams are given in the table and explained in the figure 9 (names: SMR – start of measuring (working) range, MMR – midpoint of measuring (working) range, EMR – end of measuring (working) range, MR – measuring (working) range).

FDRF603-	D, um			D1, um			D2, um			α , deg	β , deg	A, mm	B, mm
	SMR	MMR	EMR	SMR	MMR	EMR	SMR	MMR	EMR				
15/2	30	20	30	40	30	40	60	40	60	43	49	19	14
15/5	100	40	100	200	60	200	300	80	300	45	53	15	25
15/10	250	50	250	350	80	350	700	90	700	49	50	17	30
25/10	200	50	200	300	80	300	650	90	650	38	40	19	29
60/10	200	60	200	250	80	250	700	90	700	27	30	30	39
15/15	400	60	400	450	100	450	1000	110	1000	50	46	18	32
30/15	300	70	300	350	80	350	900	120	900	35	35	20	32
65/15	220	80	220	250	90	250	850	130	850	25	25	39	39
25/25	400	60	400	500	70	500	1400	100	1400	42	35	23	36
45/25	400	70	400	450	80	450	1100	120	1100	31	28	27	39
80/25	250	80	250	350	90	350	800	130	800	21	21	31	40
35/30	500	70	500	550	80	550	1200	120	1200	38	31	26	37
55/30	350	60	350	450	90	450	800	130	1300	29	26	29	40
95/30	300	90	300	350	120	350	900	150	900	18	18	31	40
45/50	600	80	600	700	100	700	1600	130	2000	32	29	27	39
65/50	500	80	500	600	90	600	1100	140	1700	24	18	28	39
105/50	400	90	400	450	100	450	800	140	1300	17	14	31	39
60/100	700	70	700	900	80	900	2000	130	2500	28	15	31	43
90/100	700	100	700	900	120	900	1300	140	2300	17	9	28	39
140/100	600	120	600	650	140	650	1100	150	1700	12	10	31	43
80/250	1300	130	1300	1700	150	2400	2500	180	4000	21	7	32	43
125/500	1100	140	2000	1700	160	3000	3000	190	5000	14	4	31	44
145/750	1150	300	1150	1500	400	1500	3000	500	3000	12	3	32	42
245/1000	1200	500	1200	1600	500	1600	2500	800	3500	8	2	34	46

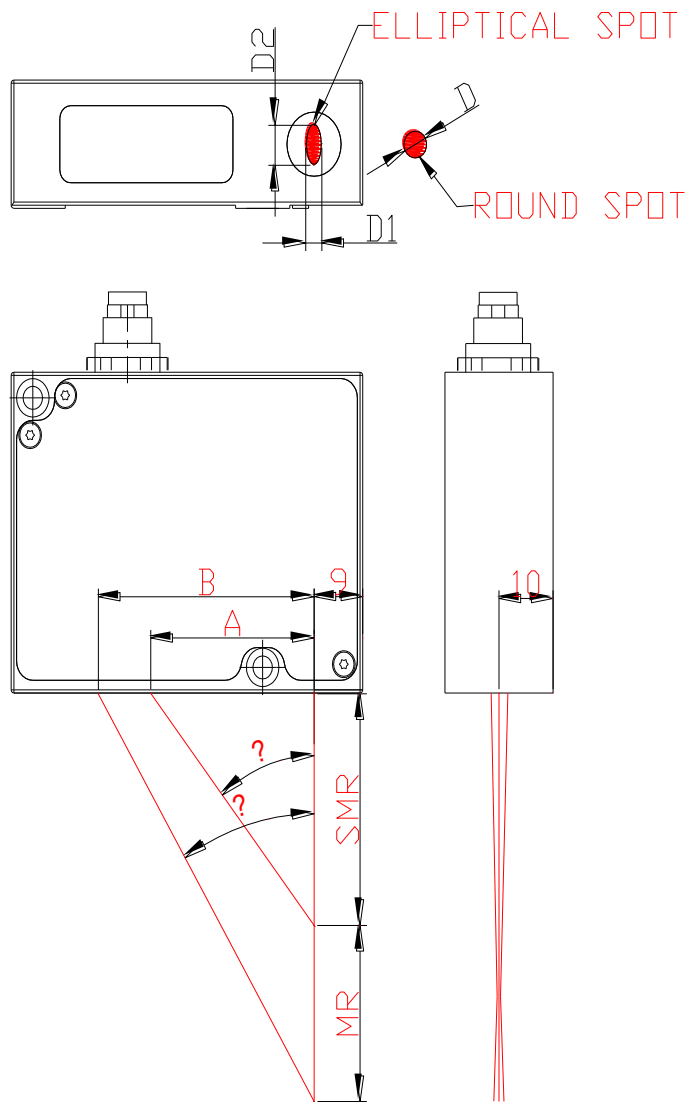


Figure 9

18.4. Connector mounting options

Overall dimensions of a cable connector sensor are shown in Fig 10, 12 and mounting options for 90 degree connector are shown in Fig.11 and Fig.13.

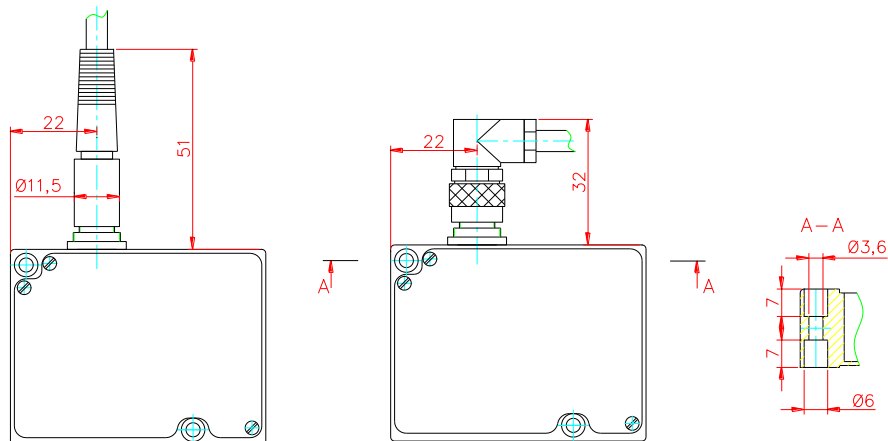


Figure 10

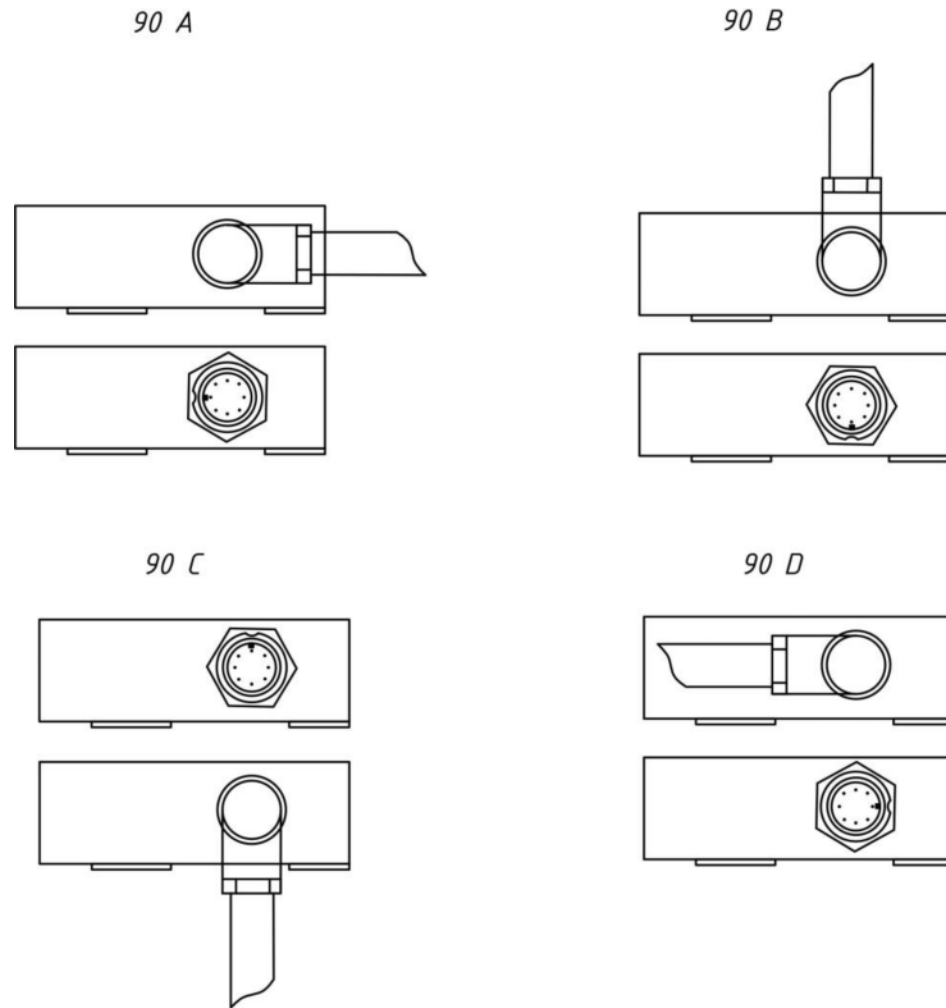


Figure 11

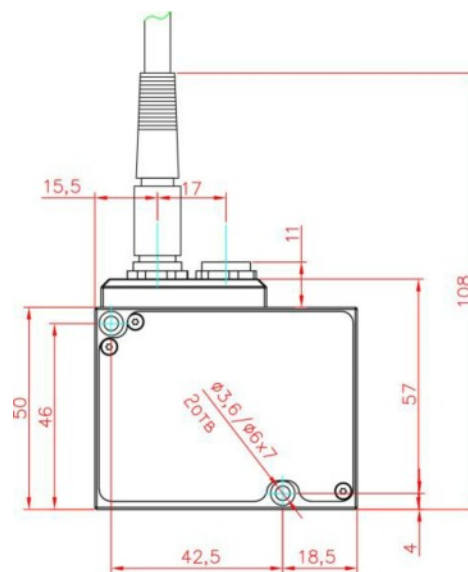


Figure 12

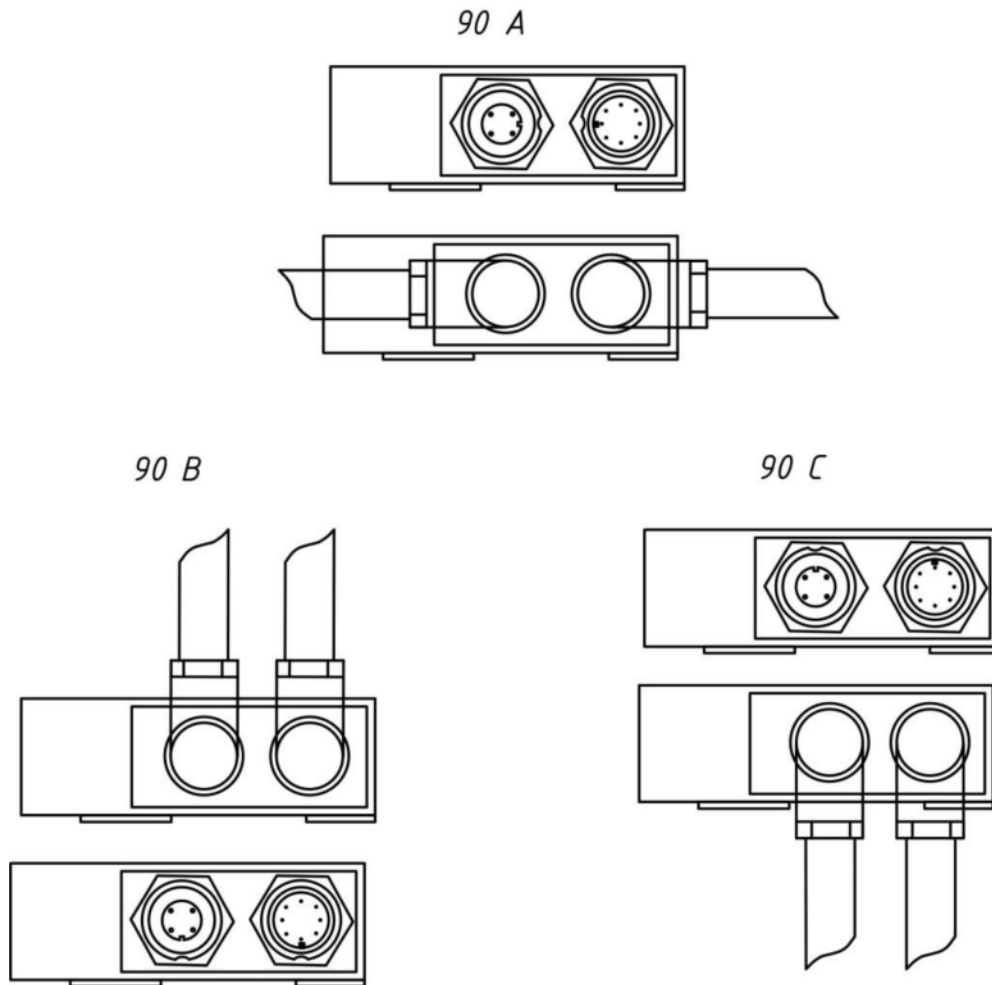


Figure 13

19. Warranty policy

Warranty assurance for the Laser triangulation sensors FDRF603 - 24 months from the date of putting in operation; warranty shelf-life - 12 months

20. Revisions.

Date	Release	Description
20.04.2013	3.0	Starting document
20.11.2013	3.1	FDRF603-10/2 sensor is excluded FDRF603-15/2 sensor is added. Automatic stream mode after sensor activation is added
18.12.2013	3.2	Figure 12, two connectors placement is added
14.08.2014	4.0.	Description of SDK functions is deleted. Support of MSVC and Borland C for Windows, Linux, Wrapper C#, Wrapper Delphi. Examples for C#, Delphi, LabView, Matlab
18.06.2015	4.1.	Linearity of sensors became twice as good, 0,05% of the range. The group of sensors with Class 2 laser safety is increased

Page 34/34

The information provided herein is to the best of our knowledge true and accurate, it is provided for guidance only. All specifications are subject to change without prior notification.

Althen – Your expert partner in Sensors & Controls | althensensors.com

Althen stands for pioneering measurement and custom sensor solutions. In addition we offer services such as calibration, design & engineering, training and renting of measurement equipment.

Germany/Austria/Switzerland
info@althen.de

Benelux
sales@althen.nl

France
info@althensensors.fr

Sweden
info@althensensors.se

USA/Canada
info@althensensors.com

Other countries
info@althensensors.com